

## Anti-CHID1 antibody (81-130) (STJ98662)

STJ98662

### GENERAL INFORMATION

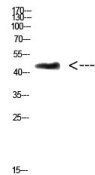
<b>Product Type</b>	Primary antibodies
<b>Short Description</b>	Rabbit polyclonal antibody anti-Chitinase Domain-Containing Protein 1 (81-130) is suitable for use in Western Blot and ELISA research applications.
<b>Applications</b>	WB, ELISA
<b>Host/Source</b>	Rabbit
<b>Reactivity</b>	Human, Mouse, Rat

### PRODUCT PROPERTIES

<b>Clonality</b>	Polyclonal
<b>Clone ID</b>	
<b>Concentration</b>	1 mg/mL
<b>Conjugation</b>	Unconjugated
<b>Purification</b>	The antibody was affinity-purified from rabbit anti-serum by affinity-chromatography.
<b>Dilution Range</b>	WB 1:500-2000 ELISA 1:10000-20000
<b>Formulation</b>	PBS, 50% Glycerol, 0.5% BSA and 0.02% Sodium Azide.
<b>Isotype</b>	IgG
<b>Storage</b>	Store at -20°C for up to 1 year from the date of receipt, and avoid repeat freeze-thaw cycles.
<b>Instruction</b>	

### TARGET INFORMATION

<b>Gene ID</b>	<a href="#">66005</a>
<b>Gene Symbol</b>	<a href="#">CHID1</a>
<b>Uniprot ID</b>	<a href="#">CHID1_HUMAN</a>
<b>Immunogen</b>	The antiserum was produced against synthesized peptide derived from the Internal region of human CHID1 at amino acid range 81-130
<b>Immunogen Region</b>	81-130
<b>Specificity</b>	CHID1 polyclonal antibody (Chitinase Domain-Containing Protein 1) binds to endogenous Chitinase Domain-Containing Protein 1 at the amino acid region 81-130.
<b>Immunogen Sequence</b>	



Western blot analysis of 3T3 cells using Antibody diluted at 500. Secondary antibody was diluted at 1:20000