

Anti-PENK antibody (51-100) (STJ98660)

STJ98660

GENERAL INFORMATION

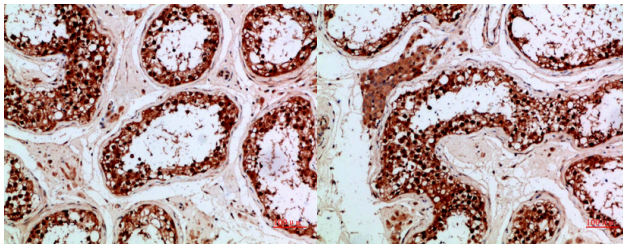
Product Type	Primary antibodies
Short Description	Rabbit polyclonal antibody anti-Proenkephalin-A Cleaved Into-Syntenkephalin-Met-Enkephalin (51-100) is suitable for use in Western Blot and ELISA research applications.
Applications	WB, ELISA
Host/Source	Rabbit
Reactivity	Human, Rat, Mouse

PRODUCT PROPERTIES

Clonality	Polyclonal
Clone ID	
Concentration	1 mg/mL
Conjugation	Unconjugated
Purification	The antibody was affinity-purified from rabbit anti-serum by affinity-chromatography.
Dilution	WB 1:500-2000
Range	ELISA 1:10000-20000
Formulation	PBS, 50% Glycerol, 0.5% BSA and 0.02% Sodium Azide.
Isotype	IgG
Storage	Store at -20°C for up to 1 year from the date of receipt, and avoid repeat freeze-thaw cycles.
Instruction	

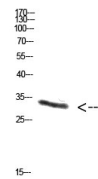
TARGET INFORMATION

Gene ID	5179
Gene Symbol	PENK
Uniprot ID	PENK_HUMAN
Immunogen	Synthetic peptide from human protein at amino acid range: 51-100
Immunogen Region	51-100
Specificity	PENK polyclonal antibody (Proenkephalin-A Cleaved Into-Syntenkephalin-Met-Enkephalin) binds to endogenous Proenkephalin-A Cleaved Into-Syntenkephalin-Met-Enkephalin at the amino acid region 51-100.
Immunogen Sequence	



Immunohistochemical analysis of paraffin-embedded human-testis, antibody was diluted at 1:200

Immunohistochemical analysis of paraffin-embedded human-testis, antibody was diluted at 1:200



Western blot analysis of NT28 cells using Antibody diluted at 1000. Secondary antibody was diluted at 1:20000