

Anti-SUPT20H antibody (231-280) (STJ98659)

STJ98659

GENERAL INFORMATION

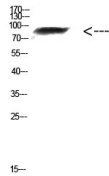
Product Type	Primary antibodies
Short Description	Rabbit polyclonal antibody anti-Transcription Factor Spt20 Homolog (231-280) is suitable for use in Western Blot and ELISA research applications.
Applications	WB, ELISA
Host/Source	Rabbit
Reactivity	Human, Mouse, Rat

PRODUCT PROPERTIES

Clonality	Polyclonal
Clone ID	
Concentration	1 mg/mL
Conjugation	Unconjugated
Purification	The antibody was affinity-purified from rabbit anti-serum by affinity-chromatography.
Dilution Range	WB 1:500-2000 ELISA 1:10000-20000
Formulation	PBS, 50% Glycerol, 0.5% BSA and 0.02% Sodium Azide.
Isotype	IgG
Storage	Store at -20°C for up to 1 year from the date of receipt, and avoid repeat freeze-thaw cycles.
Instruction	

TARGET INFORMATION

Gene ID	55578
Gene Symbol	SUPT20H
Uniprot ID	SP20H_HUMAN
Immunogen	The antiserum was produced against synthesized peptide derived from the Internal region of human FAM48A at amino acid range 231-280
Immunogen Region	231-280
Specificity	SUPT20H polyclonal antibody (Transcription Factor Spt20 Homolog) binds to endogenous Transcription Factor Spt20 Homolog at the amino acid region 231-280.
Immunogen Sequence	



Western blot analysis of mouse-kidney cells using
Antibody diluted at 1000. Secondary antibody was
diluted at 1:20000