

## Anti-COL25A1 antibody (101-150) (STJ98655)

STJ98655

### GENERAL INFORMATION

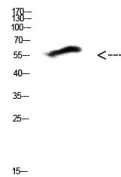
<b>Product Type</b>	Primary antibodies
<b>Short Description</b>	Rabbit polyclonal antibody anti-Collagen Alpha-1 (X $\alpha$ v Chain (101-150) is suitable for use in Western Blot and ELISA research applications.
<b>Applications</b>	WB, ELISA
<b>Host/Source</b>	Rabbit
<b>Reactivity</b>	Human, Mouse

### PRODUCT PROPERTIES

<b>Clonality</b>	Polyclonal
<b>Clone ID</b>	
<b>Concentration</b>	1 mg/mL
<b>Conjugation</b>	Unconjugated
<b>Purification</b>	The antibody was affinity-purified from rabbit anti-serum by affinity-chromatography.
<b>Dilution Range</b>	WB 1:500-2000 ELISA 1:10000-20000
<b>Formulation</b>	PBS, 50% Glycerol, 0.5% BSA and 0.02% Sodium Azide.
<b>Isotype</b>	IgG
<b>Storage Instruction</b>	Store at -20°C for up to 1 year from the date of receipt, and avoid repeat freeze-thaw cycles.

### TARGET INFORMATION

<b>Gene ID</b>	84570
<b>Gene Symbol</b>	COL25A1
<b>Uniprot ID</b>	COPA1_HUMAN
<b>Immunogen</b>	Synthetic peptide from human protein at amino acid range: 101-150
<b>Immunogen Region</b>	101-150
<b>Specificity</b>	COL25A1 polyclonal antibody (Collagen Alpha-1 (X $\alpha$ v Chain) binds to endogenous Collagen Alpha-1 (X $\alpha$ v Chain) at the amino acid region 101-150.
<b>Immunogen Sequence</b>	



Western blot analysis of HEPG2 cells using Antibody diluted at 500. Secondary antibody was diluted at 1:20000