

Anti-Cytokeratin 14/17 antibody (261-310) (STJ98650)

STJ98650

GENERAL INFORMATION

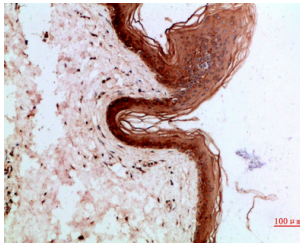
Product Type	Primary antibodies
Short Description	Rabbit polyclonal antibody anti-Keratin, type I cytoskeletal 14 and Keratin, type I cytoskeletal 17 (261-310) is suitable for use in Western Blot and ELISA research applications.
Applications	WB, ELISA
Host/Source	Rabbit
Reactivity	Human, Mouse, Rat

PRODUCT PROPERTIES

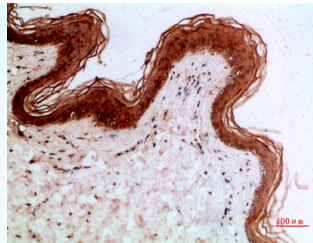
Clonality	Polyclonal
Clone ID	
Concentration	1 mg/mL
Conjugation	Unconjugated
Purification	The antibody was affinity-purified from rabbit anti-serum by affinity-chromatography.
Dilution	WB 1:500-2000
Range	ELISA 1:10000-20000
Formulation	PBS, 50% Glycerol, 0.5% BSA and 0.02% Sodium Azide.
Isotype	IgG
Storage	Store at -20°C for up to 1 year from the date of receipt, and avoid repeat freeze-thaw cycles.
Instruction	

TARGET INFORMATION

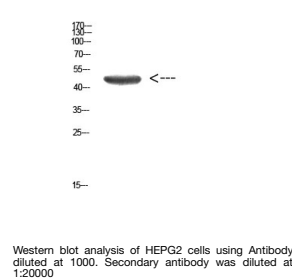
Gene ID	3872 3861
Gene Symbol	KRT17 KRT14
Uniprot ID	K1C17_HUMAN K1C14_HUMAN
Immunogen	Synthetic peptide from human protein at amino acid range: 261-310
Immunogen Region	261-310
Specificity	Cytokeratin 14/17 polyclonal antibody (Keratin, type I cytoskeletal 14 and Keratin, type I cytoskeletal 17) binds to endogenous Keratin, type I cytoskeletal 14 and Keratin, type I cytoskeletal 17 at the amino acid region 261-310.
Immunogen Sequence	



Immunohistochemical analysis of paraffin-embedded human-skin, antibody was diluted at 1:200



Immunohistochemical analysis of paraffin-embedded human-skin, antibody was diluted at 1:200



Western blot analysis of HEPG2 cells using Antibody diluted at 1000. Secondary antibody was diluted at 1:20000

This product is suitable for in-vitro studies under the RESEARCH USE ONLY [RUO] licence. This product must not be used as for diagnostic or other medical purposes.
St John's Laboratory Ltd, Knowledge Dock Business Centre, University Way, London, E16 2RD | Tel: 0208 223 3081