

Anti-RCC1 antibody (301-350) (STJ98645)

STJ98645

GENERAL INFORMATION

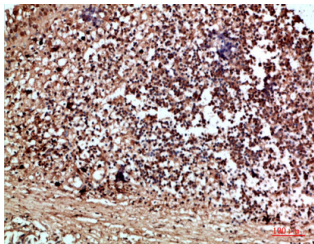
Product Type	Primary antibodies
Short Description	Rabbit polyclonal antibody anti-Regulator Of Chromosome Condensation (301-350) is suitable for use in Western Blot, Immunohistochemistry, Immunofluorescence and ELISA research applications.
Applications	WB, IHC-P, IF-P, ELISA
Host/Source	Rabbit
Reactivity	Human, Mouse, Rat

PRODUCT PROPERTIES

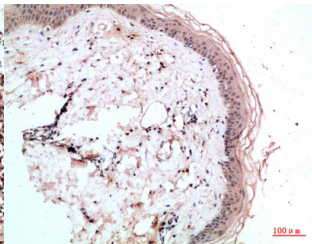
Clonality	Polyclonal
Clone ID	
Concentration	1 mg/mL
Conjugation	Unconjugated
Purification	The antibody was affinity-purified from rabbit anti-serum by affinity-chromatography.
Dilution Range	WB 1:500-2000 IHC-P 1:50-200 ELISA 1:10000-20000
Formulation	PBS, 50% Glycerol, 0.5% BSA and 0.02% Sodium Azide.
Isotype	IgG
Storage Instruction	Store at -20°C for up to 1 year from the date of receipt, and avoid repeat freeze-thaw cycles.

TARGET INFORMATION

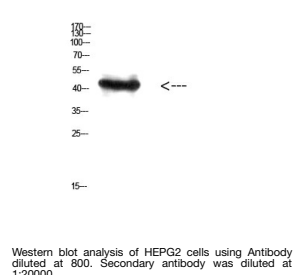
Gene ID	1104
Gene Symbol	RCC1
Uniprot ID	RCC1_HUMAN
Immunogen	Synthetic peptide from human protein at amino acid range: 301-350
Immunogen Region	301-350
Specificity	RCC1 polyclonal antibody (Regulator Of Chromosome Condensation) binds to endogenous Regulator Of Chromosome Condensation at the amino acid region 301-350.
Immunogen Sequence	



Immunohistochemical analysis of paraffin-embedded human-thyroid, antibody was diluted at 1:200



Immunohistochemical analysis of paraffin-embedded human-skin, antibody was diluted at 1:200



Western blot analysis of HEPG2 cells using Antibody diluted at 800. Secondary antibody was diluted at 1:20000

This product is suitable for in-vitro studies under the RESEARCH USE ONLY [RUO] licence. This product must not be used as for diagnostic or other medical purposes.
St John's Laboratory Ltd, Knowledge Dock Business Centre, University Way, London, E16 2RD | Tel: 0208 223 3081