

Anti-SMARCB1 antibody (331-380) (STJ98643)

STJ98643

GENERAL INFORMATION

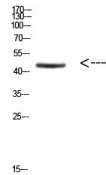
Product Type	Primary antibodies
Short Description	Rabbit polyclonal antibody anti-Swi/Snf-Related Matrix-Associated Actin-Dependent Regulator Of Chromatin Subfamily B Member 1 (331-380) is suitable for use in Western Blot and ELISA research applications.
Applications	WB, ELISA
Host/Source	Rabbit
Reactivity	Human, Mouse, Rat

PRODUCT PROPERTIES

Clonality	Polyclonal
Clone ID	
Concentration	1 mg/mL
Conjugation	Unconjugated
Purification	The antibody was affinity-purified from rabbit anti-serum by affinity-chromatography.
Dilution	WB 1:500-2000
Range	ELISA 1:10000-20000
Formulation	PBS, 50% Glycerol, 0.5% BSA and 0.02% Sodium Azide.
Isotype	IgG
Storage	Store at -20°C for up to 1 year from the date of receipt, and avoid repeat freeze-thaw cycles.
Instruction	

TARGET INFORMATION

Gene ID	6598
Gene Symbol	SMARCB1
Uniprot ID	SNF5_HUMAN
Immunogen	Synthetic peptide from human protein at amino acid range: 331-380
Immunogen Region	331-380
Specificity	SMARCB1 polyclonal antibody (Swi/Snf-Related Matrix-Associated Actin-Dependent Regulator Of Chromatin Subfamily B Member 1) binds to endogenous Swi/Snf-Related Matrix-Associated Actin-Dependent Regulator Of Chromatin Subfamily B Member 1 at the amino
Immunogen Sequence	



Western blot analysis of HEPG2 cells using Antibody diluted at 800. Secondary antibody was diluted at 1:20000