

Anti-ACSS1 antibody (620-689) (STJ98641)

STJ98641

GENERAL INFORMATION

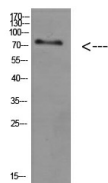
Product Type	Primary antibodies
Short Description	Rabbit polyclonal antibody anti-Acetyl-Coenzyme A Synthetase 2-Like-Mitochondrial (620-689) is suitable for use in Western Blot and ELISA research applications.
Applications	WB, ELISA
Host/Source	Rabbit
Reactivity	Human, Mouse, Rat

PRODUCT PROPERTIES

Clonality	Polyclonal
Clone ID	
Concentration	1 mg/mL
Conjugation	Unconjugated
Purification	The antibody was affinity-purified from rabbit anti-serum by affinity-chromatography.
Dilution Range	WB 1:500-2000 ELISA 1:10000-20000
Formulation	PBS, 50% Glycerol, 0.5% BSA and 0.02% Sodium Azide.
Isotype	IgG
Storage	Store at -20°C for up to 1 year from the date of receipt, and avoid repeat freeze-thaw cycles.
Instruction	

TARGET INFORMATION

Gene ID	84532
Gene Symbol	ACSS1
Uniprot ID	ACS2L_HUMAN
Immunogen	Synthetic peptide from human protein at amino acid range: 620-689
Immunogen Region	620-689
Specificity	ACSS1 polyclonal antibody (Acetyl-Coenzyme A Synthetase 2-Like-Mitochondrial) binds to endogenous Acetyl-Coenzyme A Synthetase 2-Like-Mitochondrial at the amino acid region 620-689.
Immunogen Sequence	



Western blot analysis of HEPG2 cells using Antibody diluted at 800. Secondary antibody was diluted at 1:20000