

Anti-MAP2K1 antibody (330-410) (STJ98639)

STJ98639

GENERAL INFORMATION

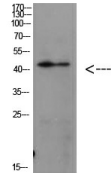
Product Type	Primary antibodies
Short Description	Rabbit polyclonal antibody anti-Dual Specificity Mitogen-Activated Protein Kinase Kinase 1 (330-410) is suitable for use in Western Blot and ELISA research applications.
Applications	WB, ELISA
Host/Source	Rabbit
Reactivity	Human, Mouse, Rat

PRODUCT PROPERTIES

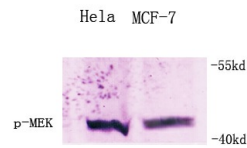
Clonality	Polyclonal
Clone ID	
Concentration	1 mg/mL
Conjugation	Unconjugated
Purification	The antibody was affinity-purified from rabbit anti-serum by affinity-chromatography.
Dilution	WB 1:500-2000
Range	ELISA 1:10000-20000
Formulation	PBS, 50% Glycerol, 0.5% BSA and 0.02% Sodium Azide.
Isotype	IgG
Storage Instruction	Store at -20°C for up to 1 year from the date of receipt, and avoid repeat freeze-thaw cycles.

TARGET INFORMATION

Gene ID	5604
Gene Symbol	MAP2K1
Uniprot ID	MP2K1_HUMAN
Immunogen	Synthetic peptide from human protein at amino acid range: 330-410
Immunogen Region	330-410
Specificity	MAP2K1 polyclonal antibody (Dual Specificity Mitogen-Activated Protein Kinase Kinase 1) binds to endogenous Dual Specificity Mitogen-Activated Protein Kinase Kinase 1 at the amino acid region 330-410.
Immunogen Sequence	



Western blot analysis of MOUSE-BRIAN cells using Antibody diluted at 1000. Secondary antibody was diluted at 1:20000



Western blot analysis of various cells using Antibody diluted at 1:1000. Secondary antibody was diluted at 1:20000

This product is suitable for in-vitro studies under the RESEARCH USE ONLY [RUO] licence. This product must not be used as for diagnostic or other medical purposes.
 St John's Laboratory Ltd, Knowledge Dock Business Centre, University Way, London, E16 2RD | Tel: 0208 223 3081