

Anti-C8B antibody (371-420) (STJ98631)

STJ98631

GENERAL INFORMATION

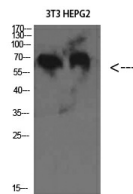
Product Type	Primary antibodies
Short Description	Rabbit polyclonal antibody anti-Complement Component C8 Beta Chain (371-420) is suitable for use in Western Blot and ELISA research applications.
Applications	WB, ELISA
Host/Source	Rabbit
Reactivity	Human, Rat

PRODUCT PROPERTIES

Clonality	Polyclonal
Clone ID	
Concentration	1 mg/mL
Conjugation	Unconjugated
Purification	The antibody was affinity-purified from rabbit anti-serum by affinity-chromatography.
Dilution Range	WB 1:500-2000 ELISA 1:10000-20000
Formulation	PBS, 50% Glycerol, 0.5% BSA and 0.02% Sodium Azide.
Isotype	IgG
Storage Instruction	Store at -20°C for up to 1 year from the date of receipt, and avoid repeat freeze-thaw cycles.

TARGET INFORMATION

Gene ID	732
Gene Symbol	C8B
Uniprot ID	CO8B_HUMAN
Immunogen	The antiserum was produced against synthesized peptide derived from the internal region of human C8B at amino acid range 371-420
Immunogen Region	371-420
Specificity	C8B polyclonal antibody (Complement Component C8 Beta Chain) binds to endogenous Complement Component C8 Beta Chain at the amino acid region 371-420.
Immunogen Sequence	



Western blot analysis of 3T3 HEPG2 cells using C8 Beta Polyclonal Antibody diluted at 1:2000. Secondary antibody was diluted at 1:20000