

Anti-YARS1 antibody (451-500) (STJ98629)

STJ98629

GENERAL INFORMATION

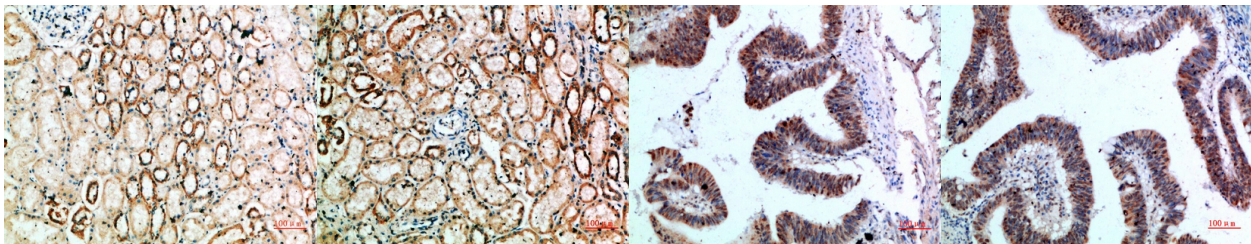
Product Type	Primary antibodies
Short Description	Rabbit polyclonal antibody anti-Tyrosine--Trna Ligase-Cytoplasmic (451-500) is suitable for use in Western Blot and ELISA research applications.
Applications	WB, ELISA
Host/Source	Rabbit
Reactivity	Human, Mouse, Rat

PRODUCT PROPERTIES

Clonality	Polyclonal
Clone ID	
Concentration	1 mg/mL
Conjugation	Unconjugated
Purification	The antibody was affinity-purified from rabbit anti-serum by affinity-chromatography.
Dilution Range	WB 1:500-2000 ELISA 1:10000-20000
Formulation	PBS, 50% Glycerol, 0.5% BSA and 0.02% Sodium Azide.
Isotype	IgG
Storage	Store at -20°C for up to 1 year from the date of receipt, and avoid repeat freeze-thaw cycles.
Instruction	

TARGET INFORMATION

Gene ID	8565
Gene Symbol	YARS1
Uniprot ID	SYYC_HUMAN
Immunogen	The antiserum was produced against synthesized peptide derived from the C-terminal region of human YARS at amino acid range 451-500
Immunogen Region	451-500
Specificity	YARS1 polyclonal antibody (Tyrosine--Trna Ligase-Cytoplasmic) binds to endogenous Tyrosine--Trna Ligase-Cytoplasmic at the amino acid region 451-500.
Immunogen Sequence	



Immunohistochemical analysis of paraffin-embedded human-kidney, antibody was diluted at 1:200

Immunohistochemical analysis of paraffin-embedded human-kidney, antibody was diluted at 1:200

Immunohistochemical analysis of paraffin-embedded human-colon-cancer, antibody was diluted at 1:200

Immunohistochemical analysis of paraffin-embedded human-colon-cancer, antibody was diluted at 1:200

This product is suitable for in-vitro studies under the RESEARCH USE ONLY [RUO] licence. This product must not be used as for diagnostic or other medical purposes.
St John's Laboratory Ltd, Knowledge Dock Business Centre, University Way, London, E16 2RD | Tel: 0208 223 3081