

## Anti-Alpha-SMA antibody (171-220) (STJ98628)

STJ98628

### GENERAL INFORMATION

<b>Product Type</b>	Primary antibodies
<b>Short Description</b>	Rabbit polyclonal antibody anti-Actin, aortic smooth muscle and Actin, alpha skeletal muscle and Actin, gamma-enteric smooth muscle and Actin, cytoplasmic 2 and Actin, alpha cardiac muscle 1 (171-220) is suitable for use in Immunofluorescence, Immuno
<b>Applications</b>	IF, ICC, WB, IHC-P, ELISA
<b>Host/Source</b>	Rabbit
<b>Reactivity</b>	Human, Mouse, Rat

### PRODUCT PROPERTIES

<b>Clonality</b>	Polyclonal
<b>Clone ID</b>	
<b>Concentration</b>	1 mg/mL
<b>Conjugation</b>	Unconjugated
<b>Purification</b>	The antibody was affinity-purified from rabbit anti-serum by affinity-chromatography.
<b>Dilution</b>	IF 1:50-200
<b>Range</b>	WB 1:500-2000 ELISA 1:10000-20000 IHC 1:50-300
<b>Formulation</b>	PBS, 50% Glycerol, 0.5% BSA and 0.02% Sodium Azide.
<b>Isotype</b>	IgG
<b>Storage Instruction</b>	Store at -20°C for up to 1 year from the date of receipt, and avoid repeat freeze-thaw cycles.

### TARGET INFORMATION

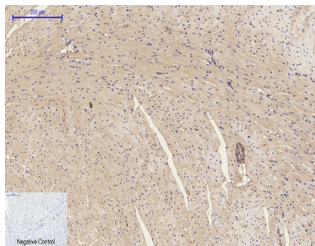
**Gene ID** [71](#)  
[58](#)  
[70](#)  
[ACTG1](#)  
[ACTA1](#)  
[ACTG\\_HUMAN](#)  
[ACTS\\_HUMAN](#)  
[ACTC\\_HUMAN](#)  
[<](#)

**Immunogen** The antiserum was produced against synthesized peptide derived from the Internal region of human ACTA2 at amino acid range 171-220

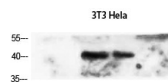
**Immunogen Region** 171-220

**Specificity** Alpha-SMA polyclonal antibody (Actin, aortic smooth muscle and Actin, alpha skeletal muscle and Actin, gamma-enteric smooth muscle and Actin, cytoplasmic 2 and Actin, alpha cardiac muscle 1) binds to endogenous Actin, aortic smooth muscle and Actin,

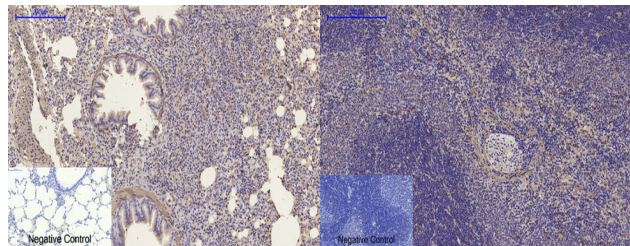
**Immunogen Sequence**



Immunohistochemical analysis of paraffin-embedded Mouse-heart tissue. 1, Alpha-SMA Polyclonal Antibody was diluted at 1:200 (4°C, overnight), 2, Sodium citrate pH 6.0 was used for antibody retrieval (>98°C, 20min), 3, Secondary antibody was diluted at 1:200 (room temperature, 30min). Negative control was used by secondary antibody only.



Western blot analysis of 3T3 HeLa cells using Alpha-SMA Polyclonal Antibody diluted at 1:1500. Secondary antibody was diluted at 1:20000



Immunohistochemical analysis of paraffin-embedded Rat-lung tissue. 1, Alpha-SMA Polyclonal Antibody was diluted at 1:200 (4°C, overnight), 2, Sodium citrate pH 6.0 was used for antibody retrieval (>98°C, 20min), 3, Secondary antibody was diluted at 1:200 (room temperature, 30min). Negative control was used by secondary antibody only.

Immunohistochemical analysis of paraffin-embedded Rat-spleen tissue. 1, Alpha-SMA Polyclonal Antibody was diluted at 1:200 (4°C, overnight), 2, Sodium citrate pH 6.0 was used for antibody retrieval (>98°C, 20min), 3, Secondary antibody was diluted at 1:200 (room temperature, 30min). Negative control was used by secondary antibody only.

This product is suitable for in-vitro studies under the RESEARCH USE ONLY [RUO] licence. This product must not be used as for diagnostic or other medical purposes.  
 St John's Laboratory Ltd, Knowledge Dock Business Centre, University Way, London, E16 2RD | Tel: 0208 223 3081