

Anti-Perforin 1 antibody (STJ98623)

STJ98623

GENERAL INFORMATION

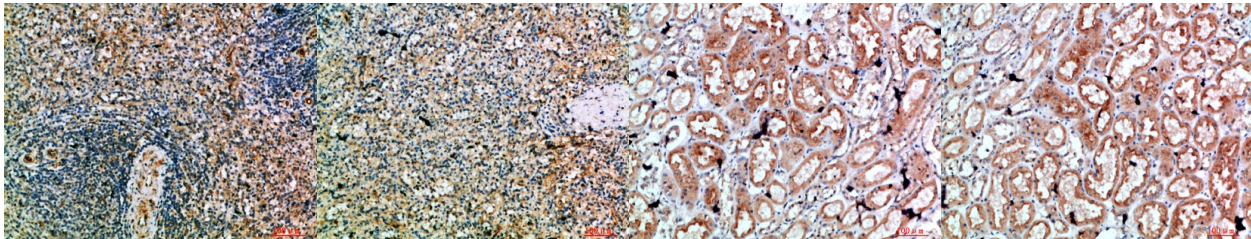
Product Type	Primary antibodies
Short Description	Rabbit polyclonal anti-Perforin 1 antibody is suitable for use in Western Blot, Immunohistochemistry and ELISA.
Background	
Applications	WB, IHC, ELISA
Host/Source	Rabbit
Reactivity	Human

PRODUCT PROPERTIES

Clonality	Polyclonal
Clone ID	
Concentration	1 mg/ml
Conjugation	Unconjugated
Purification	The antibody was affinity-purified from rabbit antiserum by affinity-chromatography using an epitope-specific immunogen.
Dilution Range	WB 1:500-2000 IHC 1:50-200 ELISA 1:10000-20000
Formulation	Liquid in PBS containing 50% glycerol, 0.5% BSA and 0.02% sodium azide.
Isotype	IgG
Storage Instruction	Store at -20°C, and avoid repeat freeze-thaw cycles.

TARGET INFORMATION

Gene ID	5551
Gene Symbol	PRF1
Uniprot ID	PERF_HUMAN
Immunogen	Synthesized peptide derived from Perforin 1
Immunogen Region	451-500 aa
Specificity	Perforin 1 polyclonal antibody detects endogenous levels of Perforin 1
Immunogen Sequence	



Immunohistochemical analysis of paraffin-embedded human spleen, antibody was diluted at 1:200

Immunohistochemical analysis of paraffin-embedded human spleen, antibody was diluted at 1:200

Immunohistochemical analysis of paraffin-embedded human kidney, antibody was diluted at 1:200

Immunohistochemical analysis of paraffin-embedded human kidney, antibody was diluted at 1:200

This product is suitable for in-vitro studies under the RESEARCH USE ONLY [RUO] licence. This product must not be used as for diagnostic or other medical purposes.
 St John's Laboratory Ltd, Knowledge Dock Business Centre, University Way, London, E16 2RD | Tel: 0208 223 3081 | Fax: 0207 681 2580