

Anti-PTHrP antibody (101-150) (STJ98621)

STJ98621

GENERAL INFORMATION

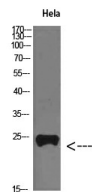
Product Type	Primary antibodies
Short Description	Rabbit polyclonal antibody anti-Parathyroid Hormone-Related Protein (101-150) is suitable for use in Western Blot and ELISA research applications.
Applications	WB, ELISA
Host/Source	Rabbit
Reactivity	Human, Rat, Mouse

PRODUCT PROPERTIES

Clonality	Polyclonal
Clone ID	
Concentration	1 mg/mL
Conjugation	Unconjugated
Purification	The antibody was affinity-purified from rabbit anti-serum by affinity-chromatography.
Dilution Range	WB 1:500-2000 ELISA 1:10000-20000
Formulation	PBS, 50% Glycerol, 0.5% BSA and 0.02% Sodium Azide.
Isotype	IgG
Storage	Store at -20°C for up to 1 year from the date of receipt, and avoid repeat freeze-thaw cycles.
Instruction	

TARGET INFORMATION

Gene ID	5744
Gene Symbol	PTHrP
Uniprot ID	PTHR_HUMAN
Immunogen	The antiserum was produced against synthesized peptide derived from the Internal region of human PTHrP at amino acid range 101-150
Immunogen Region	101-150
Specificity	PTHrP polyclonal antibody (Parathyroid Hormone-Related Protein) binds to endogenous Parathyroid Hormone-Related Protein at the amino acid region 101-150.
Immunogen Sequence	



Western blot analysis of HeLa cells using PTH-rP Polyclonal Antibody diluted at 1:800. Secondary antibody was diluted at 1:20000