

Anti-VPS35 antibody (511-560) (STJ98618)

STJ98618

GENERAL INFORMATION

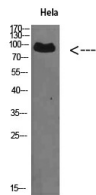
Product Type	Primary antibodies
Short Description	Rabbit polyclonal antibody anti-Vacuolar Protein Sorting-Associated Protein 35 (511-560) is suitable for use in Western Blot and ELISA research applications.
Applications	WB, ELISA
Host/Source	Rabbit
Reactivity	Human, Mouse, Rat

PRODUCT PROPERTIES

Clonality	Polyclonal
Clone ID	
Concentration	1 mg/mL
Conjugation	Unconjugated
Purification	The antibody was affinity-purified from rabbit anti-serum by affinity-chromatography.
Dilution Range	WB 1:500-2000 ELISA 1:10000-20000
Formulation	PBS, 50% Glycerol, 0.5% BSA and 0.02% Sodium Azide.
Isotype	IgG
Storage	Store at -20°C for up to 1 year from the date of receipt, and avoid repeat freeze-thaw cycles.
Instruction	

TARGET INFORMATION

Gene ID	55737
Gene Symbol	VPS35
Uniprot ID	VPS35_HUMAN
Immunogen	Synthesized peptide derived from VPS35 at amino acid range: 511-560
Immunogen Region	511-560
Specificity	VPS35 polyclonal antibody (Vacuolar Protein Sorting-Associated Protein 35) binds to endogenous Vacuolar Protein Sorting-Associated Protein 35 at the amino acid region 511-560.
Immunogen Sequence	



Western blot analysis of HeLa cells using VPS35 Polyclonal Antibody diluted at 1:500. Secondary antibody was diluted at 1:20000