

Anti-IL17RB antibody (251-300) (STJ98612)

STJ98612

GENERAL INFORMATION

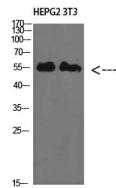
Product Type	Primary antibodies
Short Description	Rabbit polyclonal antibody anti-Interleukin-17 Receptor B (251-300) is suitable for use in Western Blot and ELISA research applications.
Applications	WB, ELISA
Host/Source	Rabbit
Reactivity	Human, Rat, Mouse

PRODUCT PROPERTIES

Clonality	Polyclonal
Clone ID	
Concentration	1 mg/mL
Conjugation	Unconjugated
Purification	The antibody was affinity-purified from rabbit anti-serum by affinity-chromatography.
Dilution Range	WB 1:500-2000 ELISA 1:10000-20000
Formulation	PBS, 50% Glycerol, 0.5% BSA and 0.02% Sodium Azide.
Isotype	IgG
Storage Instruction	Store at -20°C for up to 1 year from the date of receipt, and avoid repeat freeze-thaw cycles.

TARGET INFORMATION

Gene ID	55540
Gene Symbol	IL17RB
Uniprot ID	I17RB_HUMAN
Immunogen	Synthesized peptide derived from IL-17RB at amino acid range: 251-300
Immunogen Region	251-300
Specificity	IL17RB polyclonal antibody (Interleukin-17 Receptor B) binds to endogenous Interleukin-17 Receptor B at the amino acid region 251-300.
Immunogen Sequence	



Western blot analysis of HEPG2 3T3 cells using IL-17RB Polyclonal Antibody diluted at 1:1000. Secondary antibody was diluted at 1:20000

This product is suitable for in-vitro studies under the RESEARCH USE ONLY [RUO] licence. This product must not be used as for diagnostic or other medical purposes.
St John's Laboratory Ltd, Knowledge Dock Business Centre, University Way, London, E16 2RD | Tel: 0208 223 3081