

Anti-MIA2 antibody (361-410) (STJ98610)

STJ98610

GENERAL INFORMATION

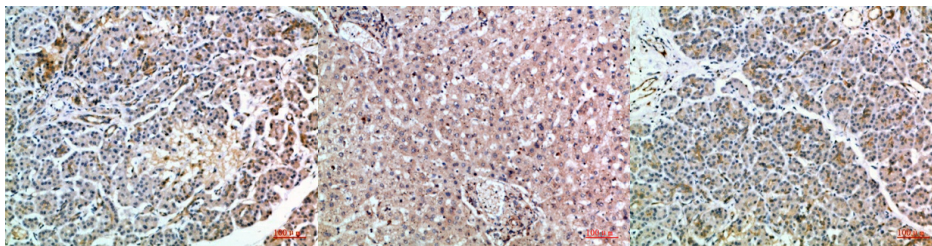
Product Type	Primary antibodies
Short Description	Rabbit polyclonal antibody anti-Melanoma Inhibitory Activity Protein 2 (361-410) is suitable for use in Western Blot and ELISA research applications.
Applications	WB, ELISA
Host/Source	Rabbit
Reactivity	Human, Rat, Mouse

PRODUCT PROPERTIES

Clonality	Polyclonal
Clone ID	
Concentration	1 mg/mL
Conjugation	Unconjugated
Purification	The antibody was affinity-purified from rabbit anti-serum by affinity-chromatography.
Dilution Range	WB 1:500-2000 ELISA 1:10000-20000
Formulation	PBS, 50% Glycerol, 0.5% BSA and 0.02% Sodium Azide.
Isotype	IgG
Storage	Store at -20°C for up to 1 year from the date of receipt, and avoid repeat freeze-thaw cycles.
Instruction	

TARGET INFORMATION

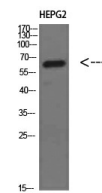
Gene ID	4253
Gene Symbol	MIA2
Uniprot ID	MIA2_HUMAN
Immunogen	Synthesized peptide derived from MIA2 at amino acid range: 361-410
Immunogen Region	361-410
Specificity	MIA2 polyclonal antibody (Melanoma Inhibitory Activity Protein 2) binds to endogenous Melanoma Inhibitory Activity Protein 2 at the amino acid region 361-410.
Immunogen Sequence	



Immunohistochemical analysis of paraffin-embedded human-pancreas, antibody was diluted at 1:200

Immunohistochemical analysis of paraffin-embedded human-liver, antibody was diluted at 1:200

Immunohistochemical analysis of paraffin-embedded human-pancreas, antibody was diluted at 1:200



Western blot analysis of HEPG2 cells using MIA2 Polyclonal Antibody diluted at 1:500. Secondary antibody was diluted at 1:20000