

Anti-TRAF1 antibody (191-240) (STJ98606)

STJ98606

GENERAL INFORMATION

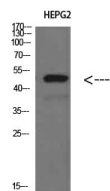
Product Type	Primary antibodies
Short Description	Rabbit polyclonal antibody anti-Tnf Receptor-Associated Factor 1 (191-240) is suitable for use in Western Blot and ELISA research applications.
Applications	WB, ELISA
Host/Source	Rabbit
Reactivity	Human, Mouse

PRODUCT PROPERTIES

Clonality	Polyclonal
Clone ID	
Concentration	1 mg/mL
Conjugation	Unconjugated
Purification	The antibody was affinity-purified from rabbit anti-serum by affinity-chromatography.
Dilution Range	WB 1:500-2000 ELISA 1:10000-20000
Formulation	PBS, 50% Glycerol, 0.5% BSA and 0.02% Sodium Azide.
Isotype	IgG
Storage	Store at -20°C for up to 1 year from the date of receipt, and avoid repeat freeze-thaw cycles.
Instruction	

TARGET INFORMATION

Gene ID	7185
Gene Symbol	TRAF1
Uniprot ID	TRAF1_HUMAN
Immunogen	Synthesized peptide derived from TRAF1 at amino acid range: 191-240
Immunogen Region	191-240
Specificity	TRAF1 polyclonal antibody (Tnf Receptor-Associated Factor 1) binds to endogenous Tnf Receptor-Associated Factor 1 at the amino acid region 191-240.
Immunogen Sequence	



Western blot analysis of HEPG2 cells using TRAF1 Polyclonal Antibody diluted at 1:500. Secondary antibody was diluted at 1:20000