

Anti-IGHM antibody (391-440) (STJ98605)

STJ98605

GENERAL INFORMATION

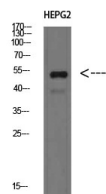
| | |
|--------------------------|---|
| Product Type | Primary antibodies |
| Short Description | Rabbit polyclonal antibody anti-Immunoglobulin Heavy Constant Mu (391-440) is suitable for use in Western Blot, Immunohistochemistry, Immunofluorescence and ELISA research applications. |
| Applications | WB, IHC-P, IF-P, ELISA |
| Host/Source | Rabbit |
| Reactivity | Human, Mouse, Rat |

PRODUCT PROPERTIES

| | |
|----------------------------|--|
| Clonality | Polyclonal |
| Clone ID | |
| Concentration | 1 mg/mL |
| Conjugation | Unconjugated |
| Purification | The antibody was affinity-purified from rabbit anti-serum by affinity-chromatography. |
| Dilution Range | IHC 100-300 WB 1:500-2000 ELISA 1:10000-20000 |
| Formulation | PBS, 50% Glycerol, 0.5% BSA and 0.02% Sodium Azide. |
| Isotype | IgG |
| Storage Instruction | Store at -20°C for up to 1 year from the date of receipt, and avoid repeat freeze-thaw cycles. |

TARGET INFORMATION

| | |
|---------------------------|--|
| Gene ID | NA |
| Gene Symbol | IGHM |
| Uniprot ID | IGHM_HUMAN |
| Immunogen | Synthesized peptide derived from IgM Chain C at amino acid range: 391-440 |
| Immunogen Region | 391-440 |
| Specificity | IGHM polyclonal antibody (Immunoglobulin Heavy Constant Mu) binds to endogenous Immunoglobulin Heavy Constant Mu at the amino acid region 391-440. |
| Immunogen Sequence | |



Western blot analysis of HEPG2 cells using IgM Chain C Polyclonal Antibody diluted at 1:500. Secondary antibody was diluted at 1:20000