

Anti-GABARAPL2 antibody (STJ98595)

STJ98595

GENERAL INFORMATION

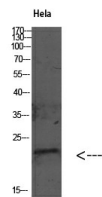
Product Type	Primary antibodies
Short Description	Rabbit polyclonal antibody anti-Gamma-Aminobutyric Acid Receptor-Associated Protein-Like 2 is suitable for use in Western Blot and ELISA research applications.
Applications	WB, ELISA
Host/Source	Rabbit
Reactivity	Human, Mouse, Rat

PRODUCT PROPERTIES

Clonality	Polyclonal
Clone ID	
Concentration	1 mg/mL
Conjugation	Unconjugated
Purification	The antibody was affinity-purified from rabbit anti-serum by affinity-chromatography.
Dilution Range	WB 1:500-2000 ELISA 1:10000-20000
Formulation	PBS, 50% Glycerol, 0.5% BSA and 0.02% Sodium Azide.
Isotype	IgG
Storage	Store at -20°C for up to 1 year from the date of receipt, and avoid repeat freeze-thaw cycles.
Instruction	

TARGET INFORMATION

Gene ID	11345
Gene Symbol	GABARAPL2
Uniprot ID	GBRL2_HUMAN
Immunogen	Synthetic peptide of GABARAP
Immunogen Region	
Specificity	GABARAPL2 polyclonal antibody (Gamma-Aminobutyric Acid Receptor-Associated Protein-Like 2) binds to endogenous Gamma-Aminobutyric Acid Receptor-Associated Protein-Like 2.
Immunogen Sequence	



Western blot analysis of various cells using Antibody diluted at 1:1000. Secondary antibody was diluted at 1:20000