

Anti-BECN1 antibody (110-190) (STJ98594)

STJ98594

GENERAL INFORMATION

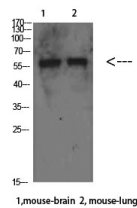
Product Type	Primary antibodies
Short Description	Rabbit polyclonal antibody anti-Beclin-1 (110-190) is suitable for use in Western Blot and ELISA research applications.
Applications	WB, ELISA
Host/Source	Rabbit
Reactivity	Human, Mouse

PRODUCT PROPERTIES

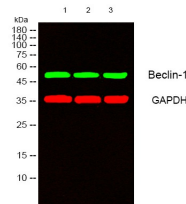
Clonality	Polyclonal
Clone ID	
Concentration	1 mg/mL
Conjugation	Unconjugated
Purification	The antibody was affinity-purified from rabbit anti-serum by affinity-chromatography.
Dilution Range	WB 1:500-2000 ELISA 1:10000-20000
Formulation	PBS, 50% Glycerol, 0.5% BSA and 0.02% Sodium Azide.
Isotype	IgG
Storage Instruction	Store at -20°C for up to 1 year from the date of receipt, and avoid repeat freeze-thaw cycles.

TARGET INFORMATION

Gene ID	8678
Gene Symbol	BECN1
Uniprot ID	BECN1_HUMAN
Immunogen	Synthesized peptide derived from Beclin-1. at amino acid range: 110-190
Immunogen Region	110-190
Specificity	BECN1 polyclonal antibody (Beclin-1) binds to endogenous Beclin-1 at the amino acid region 110-190.
Immunogen Sequence	



Western blot analysis of mouse-brain mouse-lung cells using Beclin-1 Polyclonal Antibody diluted at 1:500. Secondary antibody was diluted at 1:20000



Western blot analysis of lysates from 1) mouse-brain, 2) mouse-lung, 3) HeLa cells, (Green) primary antibody was diluted at 1:1000, 4°C over night, secondary antibody (cat: NA) was diluted at 1:10000, 37°C 1hour. (Red) GAPDH monoclonal antibody (2B8) (cat: STJ96931) antibody was diluted at 1:5000 as loading control, 4°C over night, secondary antibody (cat: NA) was diluted at 1:10000, 37°C 1hour.

This product is suitable for in-vitro studies under the RESEARCH USE ONLY [RUO] licence. This product must not be used as for diagnostic or other medical purposes.
St John's Laboratory Ltd, Knowledge Dock Business Centre, University Way, London, E16 2RD | Tel: 0208 223 3081