

Anti-WIP1 antibody (STJ98592)

STJ98592

GENERAL INFORMATION

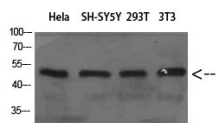
Product Type	Primary antibodies
Short Description	Rabbit polyclonal antibody anti-Wd Repeat Domain Phosphoinositide-Interacting Protein 1 is suitable for use in Western Blot and ELISA research applications.
Applications	WB, ELISA
Host/Source	Rabbit
Reactivity	Human, Mouse

PRODUCT PROPERTIES

Clonality	Polyclonal
Clone ID	
Concentration	1 mg/mL
Conjugation	Unconjugated
Purification	The antibody was affinity-purified from rabbit anti-serum by affinity-chromatography.
Dilution Range	WB 1:500-2000 ELISA 1:10000-20000
Formulation	PBS, 50% Glycerol, 0.5% BSA and 0.02% Sodium Azide.
Isotype	IgG
Storage Instruction	Store at -20°C for up to 1 year from the date of receipt, and avoid repeat freeze-thaw cycles.

TARGET INFORMATION

Gene ID	55062
Gene Symbol	WIP1
Uniprot ID	WIP1_HUMAN
Immunogen	Synthetic peptide of WIP1
Immunogen Region	
Specificity	WIP1 polyclonal antibody (Wd Repeat Domain Phosphoinositide-Interacting Protein 1) binds to endogenous Wd Repeat Domain Phosphoinositide-Interacting Protein 1.
Immunogen Sequence	



Western blot analysis of HeLa SH-SY5Y 293T 3T3 cells using WIP1 Polyclonal Antibody diluted at 1:800. Secondary antibody was diluted at 1:20000