

Anti-BCL2 antibody (10-90) (STJ98587)

STJ98587

GENERAL INFORMATION

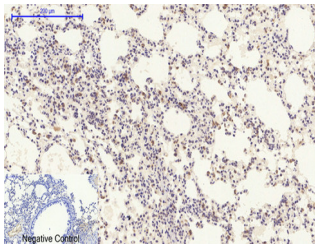
Product Type	Primary antibodies
Short Description	Rabbit polyclonal antibody anti-Apoptosis Regulator Bcl-2 (10-90) is suitable for use in Western Blot, Immunohistochemistry, Immunofluorescence and ELISA research applications.
Applications	WB, IHC-P, IF-P, ELISA
Host/Source	Rabbit
Reactivity	Mouse, Rat

PRODUCT PROPERTIES

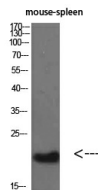
Clonality	Polyclonal
Clone ID	
Concentration	1 mg/mL
Conjugation	Unconjugated
Purification	The antibody was affinity-purified from rabbit anti-serum by affinity-chromatography.
Dilution Range	WB 1:500-2000 ELISA 1:10000-20000 IHC 1:50-300
Formulation	PBS, 50% Glycerol, 0.5% BSA and 0.02% Sodium Azide.
Isotype	IgG
Storage Instruction	Store at -20°C for up to 1 year from the date of receipt, and avoid repeat freeze-thaw cycles.

TARGET INFORMATION

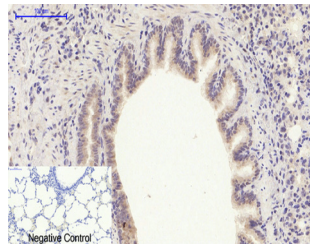
Gene ID	596
Gene Symbol	BCL2
Uniprot ID	BCL2_HUMAN
Immunogen	Synthesized peptide derived from Bcl-2. at amino acid range: 10-90
Immunogen Region	10-90
Specificity	BCL2 polyclonal antibody (Apoptosis Regulator Bcl-2) binds to endogenous Apoptosis Regulator Bcl-2 at the amino acid region 10-90.
Immunogen Sequence	



Negative Control
Immunohistochemical analysis of paraffin-embedded Mouse-lung tissue. 1. Bcl-2 Polyclonal Antibody was diluted at 1:200 (4°C, overnight). 2. Sodium citrate pH 6.0 was used for antibody retrieval (>98°C, 20min). 3. Secondary antibody was diluted at 1:200 (room temperature, 30min). Negative control was used by secondary antibody only.



mouse-spleen
Western blot analysis of mouse-spleen cells using Bcl-2 Polyclonal Antibody diluted at 1:500. Secondary antibody was diluted at 1:20000



Negative Control
Immunohistochemical analysis of paraffin-embedded Rat-lung tissue. 1. Bcl-2 Polyclonal Antibody was diluted at 1:200 (4°C, overnight). 2. Sodium citrate pH 6.0 was used for antibody retrieval (>98°C, 20min). 3. Secondary antibody was diluted at 1:200 (room temperature, 30min). Negative control was used by secondary antibody only.

This product is suitable for in-vitro studies under the RESEARCH USE ONLY [RUO] licence. This product must not be used as for diagnostic or other medical purposes.

St John's Laboratory Ltd, Knowledge Dock Business Centre, University Way, London, E16 2RD | Tel: 0208 223 3081