

## Anti-PWWP3A antibody (661-710) (STJ98584)

STJ98584

### GENERAL INFORMATION

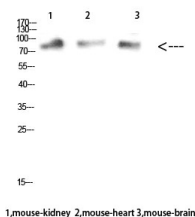
<b>Product Type</b>	Primary antibodies
<b>Short Description</b>	Rabbit polyclonal antibody anti-Pwwp Domain-Containing Dna Repair Factor 3a (661-710) is suitable for use in Western Blot and ELISA research applications.
<b>Applications</b>	WB, ELISA
<b>Host/Source</b>	Rabbit
<b>Reactivity</b>	Human, Mouse, Rat

### PRODUCT PROPERTIES

<b>Clonality</b>	Polyclonal
<b>Clone ID</b>	
<b>Concentration</b>	1 mg/mL
<b>Conjugation</b>	Unconjugated
<b>Purification</b>	The antibody was affinity-purified from rabbit anti-serum by affinity-chromatography.
<b>Dilution Range</b>	WB 1:500-2000 ELISA 1:10000-20000
<b>Formulation</b>	PBS, 50% Glycerol, 0.5% BSA and 0.02% Sodium Azide.
<b>Isotype</b>	IgG
<b>Storage</b>	Store at -20°C for up to 1 year from the date of receipt, and avoid repeat freeze-thaw cycles.
<b>Instruction</b>	

### TARGET INFORMATION

<b>Gene ID</b>	84939
<b>Gene Symbol</b>	PWWP3A
<b>Uniprot ID</b>	PWP3A_HUMAN
<b>Immunogen</b>	The antiserum was produced against synthesized peptide derived from the C-terminal region of human MUM1 at amino acid range 661-710
<b>Immunogen Region</b>	661-710
<b>Specificity</b>	PWWP3A polyclonal antibody (Pwwp Domain-Containing Dna Repair Factor 3a) binds to endogenous Pwwp Domain-Containing Dna Repair Factor 3a at the amino acid region 661-710.
<b>Immunogen Sequence</b>	



Western blot analysis of mouse-kidney mouse-heart mouse-brain cells using MUM1 Polyclonal Antibody diluted at 1:1000. Secondary antibody was diluted at 1:20000