

## Anti-PTEN antibody (251-300) (STJ98583)

STJ98583

### GENERAL INFORMATION

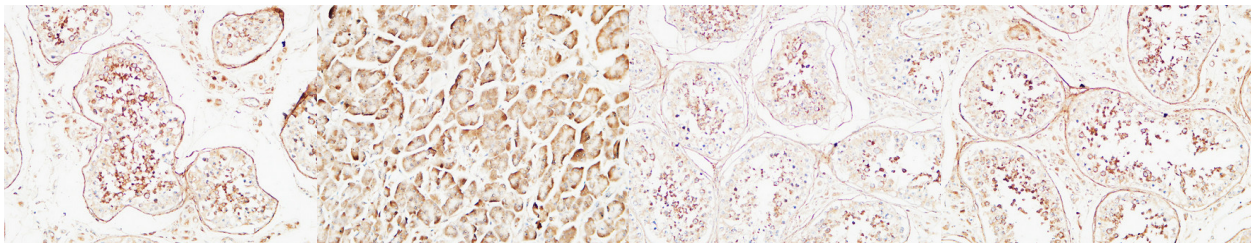
|                          |  |
|--------------------------|--|
| <b>Product Type</b>      | Primary antibodies   |
| <b>Short Description</b> | Rabbit polyclonal antibody anti-Phosphatidylinositol 3-4-5-Trisphosphate 3-Phosphatase And Dual-Specificity Protein Phosphatase Pten (251-300) is suitable for use in Immunofluorescence, Immunocytochemistry, Western Blot, Immunohistochemistry and ELIS |
| <b>Applications</b>      | IF, ICC, WB, IHC-P, ELISA  |
| <b>Host/Source</b>       | Rabbit   |
| <b>Reactivity</b>        | Human, Mouse, Rat  |

### PRODUCT PROPERTIES

|                            |  |
|----------------------------|--|
| <b>Clonality</b>           | Polyclonal   |
| <b>Clone ID</b>            |  |
| <b>Concentration</b>       | 1 mg/mL  |
| <b>Conjugation</b>         | Unconjugated   |
| <b>Purification</b>        | The antibody was affinity-purified from rabbit anti-serum by affinity-chromatography.          |
| <b>Dilution</b>            | IF 1:50-200  |
| <b>Range</b>               | IHC 100-300<br>WB 1:500-2000<br>ELISA 1:10000-20000  |
| <b>Formulation</b>         | PBS, 50% Glycerol, 0.5% BSA and 0.02% Sodium Azide.  |
| <b>Isotype</b>             | IgG  |
| <b>Storage Instruction</b> | Store at -20°C for up to 1 year from the date of receipt, and avoid repeat freeze-thaw cycles. |

### TARGET INFORMATION

|                           |  |
|---------------------------|--|
| <b>Gene ID</b>            | 5728   |
| <b>Gene Symbol</b>        | PTEN   |
| <b>Uniprot ID</b>         | PTEN_HUMAN   |
| <b>Immunogen</b>          | Synthesized peptide derived from PTEN at amino acid range: 251-300   |
| <b>Immunogen Region</b>   | 251-300  |
| <b>Specificity</b>        | PTEN polyclonal antibody (Phosphatidylinositol 3-4-5-Trisphosphate 3-Phosphatase And Dual-Specificity Protein Phosphatase Pten) binds to endogenous Phosphatidylinositol 3-4-5-Trisphosphate 3-Phosphatase And Dual-Specificity Protein Phosphatase Pten a |
| <b>Immunogen Sequence</b> |  |



Immunohistochemical analysis of paraffin-embedded Human testis. 1. Antibody was diluted at 1:200 (4°C overnight). 2. High-pressure and temperature EDTA, pH8.0 was used for antigen retrieval. 3. Secondary antibody was diluted at 1:200 (room temperature, 30min).

Immunohistochemical analysis of paraffin-embedded Human pancreas. 1. Antibody was diluted at 1:200 (4°C overnight). 2. High-pressure and temperature EDTA, pH8.0 was used for antigen retrieval. 3. Secondary antibody was diluted at 1:200 (room temperature, 30min).

Immunohistochemical analysis of paraffin-embedded Human testis. 1. Antibody was diluted at 1:200 (4°C overnight). 2. High-pressure and temperature EDTA, pH8.0 was used for antigen retrieval. 3. Secondary antibody was diluted at 1:200 (room temperature, 30min).

Immunohistochemical analysis of paraffin-embedded Human testis. 1. Antibody was diluted at 1:200 (4°C overnight). 2. High-pressure and temperature EDTA, pH8.0 was used for antigen retrieval. 3. Secondary antibody was diluted at 1:200 (room temperature, 30min).

This product is suitable for in-vitro studies under the RESEARCH USE ONLY [RUO] licence. This product must not be used as for diagnostic or other medical purposes.  
St John's Laboratory Ltd, Knowledge Dock Business Centre, University Way, London, E16 2RD | Tel: 0208 223 3081