

Anti-CD35 antibody (Internal) (STJ98580)

STJ98580

GENERAL INFORMATION

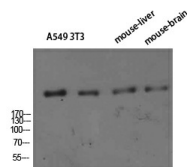
Product Type	Primary antibodies
Short Description	Rabbit polyclonal antibody anti-Complement receptor type 1 and Complement component receptor 1-like protein (Internal) is suitable for use in Western Blot and ELISA research applications.
Applications	WB, ELISA
Host/Source	Rabbit
Reactivity	Human, Rat, Mouse

PRODUCT PROPERTIES

Clonality	Polyclonal
Clone ID	
Concentration	1 mg/mL
Conjugation	Unconjugated
Purification	The antibody was affinity-purified from rabbit anti-serum by affinity-chromatography.
Dilution	WB 1:500-2000
Range	ELISA 1:10000-20000
Formulation	PBS, 50% Glycerol, 0.5% BSA and 0.02% Sodium Azide.
Isotype	IgG
Storage	Store at -20°C for up to 1 year from the date of receipt, and avoid repeat freeze-thaw cycles.
Instruction	

TARGET INFORMATION

Gene ID	1379 1378
Gene Symbol	CR1L CR1
Uniprot ID	CR1L_HUMAN CR1_HUMAN
Immunogen	The antiserum was produced against synthesized peptide derived from the Internal region of human CR1/CR1L at amino acid range 300-350 & 740-790
Immunogen Region	Internal
Specificity	CD35 polyclonal antibody (Complement receptor type 1 and Complement component receptor 1-like protein) binds to endogenous Complement receptor type 1 and Complement component receptor 1-like protein at the amino acid region Internal.
Immunogen Sequence	



Western blot analysis of A549 3T3 mouse-liver mouse-brain cells using CD35 Polyclonal Antibody diluted at 1:800. Secondary antibody was diluted at 1:20000

This product is suitable for in-vitro studies under the RESEARCH USE ONLY [RUO] licence. This product must not be used as for diagnostic or other medical purposes.
St John's Laboratory Ltd, Knowledge Dock Business Centre, University Way, London, E16 2RD | Tel: 0208 223 3081