

## Anti-TLE1/2/3/4 antibody (721-770) (STJ98577)

STJ98577

### GENERAL INFORMATION

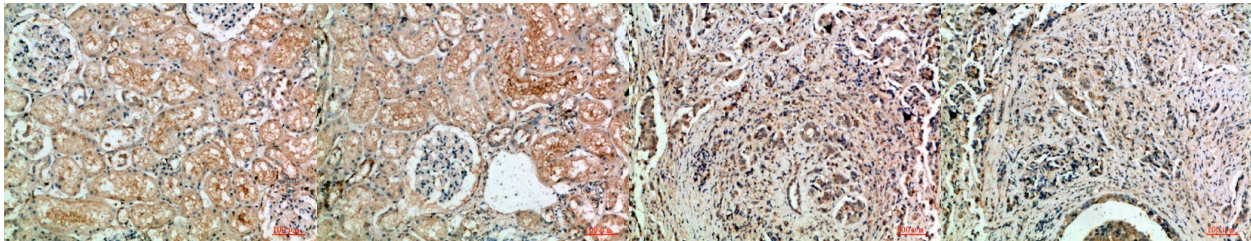
<b>Product Type</b>	Primary antibodies
<b>Short Description</b>	Rabbit polyclonal antibody anti-Transducin-like enhancer protein 1 and Transducin-like enhancer protein 2 and Transducin-like enhancer protein 3 and Transducin-like enhancer protein 4 (721-770) is suitable for use in Western Blot and ELISA research a
<b>Applications</b>	WB, ELISA
<b>Host/Source</b>	Rabbit
<b>Reactivity</b>	Human, Mouse, Rat

### PRODUCT PROPERTIES

<b>Clonality</b>	Polyclonal
<b>Clone ID</b>	
<b>Concentration</b>	1 mg/mL
<b>Conjugation</b>	Unconjugated
<b>Purification</b>	The antibody was affinity-purified from rabbit anti-serum by affinity-chromatography.
<b>Dilution</b>	WB 1:500-2000
<b>Range</b>	ELISA 1:10000-20000
<b>Formulation</b>	PBS, 50% Glycerol, 0.5% BSA and 0.02% Sodium Azide.
<b>Isotype</b>	IgG
<b>Storage</b>	Store at -20°C for up to 1 year from the date of receipt, and avoid repeat freeze-thaw cycles.
<b>Instruction</b>	

### TARGET INFORMATION

<b>Gene ID</b>	<a href="#">7089</a> <a href="#">7090</a> <a href="#">7088</a> <a href="#">TLE2</a> <a href="#">TLE3</a> <a href="#">TLE2_HUMAN</a> <a href="#">TLE3_HUMAN</a> <a href="#">TLE1_HUMAN</a> <
<b>Immunogen</b>	The antiserum was produced against synthesized peptide derived from the C-terminal region of human TLE1/TLE2/TLE3/TLE4 at amino acid range 721-770
<b>Immunogen Region</b>	721-770
<b>Specificity</b>	TLE1/2/3/4 polyclonal antibody (Transducin-like enhancer protein 1 and Transducin-like enhancer protein 2 and Transducin-like enhancer protein 3 and Transducin-like enhancer protein 4) binds to endogenous Transducin-like enhancer protein 1 and Transd
<b>Immunogen Sequence</b>	



Immunohistochemical analysis of paraffin-embedded human-kidney, antibody was diluted at 1:200

Immunohistochemical analysis of paraffin-embedded human-kidney, antibody was diluted at 1:200

Immunohistochemical analysis of paraffin-embedded human-breast-cancer, antibody was diluted at 1:200

Immunohistochemical analysis of paraffin-embedded human-breast-cancer, antibody was diluted at 1:200

This product is suitable for in-vitro studies under the RESEARCH USE ONLY [RUO] licence. This product must not be used as for diagnostic or other medical purposes.  
 St John's Laboratory Ltd, Knowledge Dock Business Centre, University Way, London, E16 2RD | Tel: 0208 223 3081