

## Anti-Phospho-VIM-Tyr38 antibody (20-90) (STJ98572)

STJ98572

### GENERAL INFORMATION

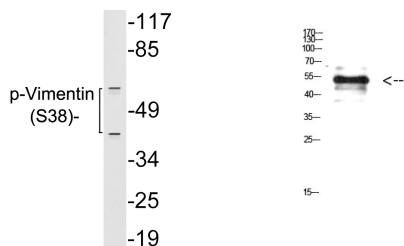
<b>Product Type</b>	Primary antibodies
<b>Short Description</b>	Rabbit polyclonal antibody anti-Phospho-Vimentin-Tyr38 (20-90) is suitable for use in Western Blot and ELISA research applications.
<b>Applications</b>	WB, ELISA
<b>Host/Source</b>	Rabbit
<b>Reactivity</b>	Human, Mouse, Rat

### PRODUCT PROPERTIES

<b>Clonality</b>	Polyclonal
<b>Clone ID</b>	
<b>Concentration</b>	1 mg/mL
<b>Conjugation</b>	Unconjugated
<b>Purification</b>	The antibody was affinity-purified from rabbit anti-serum by affinity-chromatography.
<b>Dilution Range</b>	WB 1:500-10000 ELISA 1:10000
<b>Formulation</b>	PBS, pH 7.4, 0.02% Sodium Azide and 50% Glycerol.
<b>Isotype</b>	IgG
<b>Storage</b>	Store at -20°C for up to 1 year from the date of receipt, and avoid repeat freeze-thaw cycles.
<b>Instruction</b>	

### TARGET INFORMATION

<b>Gene ID</b>	7431
<b>Gene Symbol</b>	VIM
<b>Uniprot ID</b>	VIME_HUMAN
<b>Immunogen</b>	Synthesized phospho-peptide around the phosphorylation site of human Vimentin (Phospho-Tyr38)
<b>Immunogen Region</b>	20-90
<b>Specificity</b>	Phospho-VIM-Tyr38 polyclonal antibody (Vimentin) binds to endogenous Vimentin at the amino acid region 20-90 only when phosphorylated at Tyr38.
<b>Immunogen Sequence</b>	



Western blot analysis of lysates from 293 cells treated with paclitaxel, using p-Vimentin (Phospho-Ser38) antibody.

Western blot analysis of HELA cells using Antibody diluted at 500. Secondary antibody was diluted at 1:20000.