

Anti-CKMT1A/CKMT1B antibody (STJ98568)

STJ98568

GENERAL INFORMATION

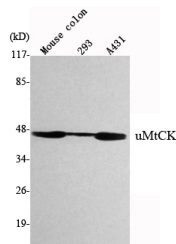
Product Type	Primary antibodies
Short Description	Mouse monoclonal antibody anti-Creatine Kinase U-Type-Mitochondrial is suitable for use in Western Blot research applications.
Applications	WB
Host/Source	Mouse
Reactivity	Human, Mouse, Rat, Dog, Pig, Rabbit

PRODUCT PROPERTIES

Clonality	Monoclonal
Clone ID	
Concentration	1 mg/mL
Conjugation	Unconjugated
Purification	The antibody was isolated from ascitic fluid by immunoaffinity chromatography using antigens coupled to agarose beads.
Dilution Range	WB 1:1000-1:2000
Formulation	Buffer, 0.1M Tris-Glycine (pH 7.4, 150 mM NaCl) with 0.2% Sodium Azide, 50% Glycerol.
Isotype	
Storage Instruction	Store at -20°C for up to 1 year from the date of receipt, and avoid repeat freeze-thaw cycles.

TARGET INFORMATION

Gene ID	1159/548596
Gene Symbol	CKMT1A.CKMT1B
Uniprot ID	KCRU_HUMAN
Immunogen	Purified recombinant human uMtCK protein fragments expressed in E.coli.
Immunogen Region	
Specificity	CKMT1A/CKMT1B monoclonal antibody (Creatine Kinase U-Type-Mitochondrial) binds to endogenous Creatine Kinase U-Type-Mitochondrial.
Immunogen Sequence	



Western blot analysis using uMtCK monoclonal antibody against Mouse Colon, 293, A431 cell lysate.

This product is suitable for in-vitro studies under the RESEARCH USE ONLY [RUO] licence. This product must not be used as for diagnostic or other medical purposes.
 St John's Laboratory Ltd, Knowledge Dock Business Centre, University Way, London, E16 2RD | Tel: 0208 223 3081