

Anti-TUBB1 antibody (STJ98566)

STJ98566

GENERAL INFORMATION

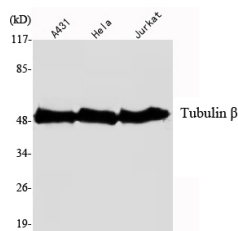
Product Type	Primary antibodies
Short Description	Mouse monoclonal antibody anti-Tubulin Beta-1 Chain is suitable for use in Western Blot research applications.
Applications	WB
Host/Source	Mouse
Reactivity	Human, Mouse, Rat, Bovine, Rabbit

PRODUCT PROPERTIES

Clonality	Monoclonal
Clone ID	
Concentration	1 mg/mL
Conjugation	Unconjugated
Purification	The antibody was isolated from ascitic fluid by immunoaffinity chromatography using antigens coupled to agarose beads.
Dilution Range	WB 1:1000-1:2000
Formulation	Buffer, 0.1M Tris-Glycine (pH 7.4, 150 mM NaCl) with 0.2% Sodium Azide, 50% Glycerol.
Isotype	
Storage Instruction	Store at -20°C for up to 1 year from the date of receipt, and avoid repeat freeze-thaw cycles.

TARGET INFORMATION

Gene ID	81027
Gene Symbol	TUBB1
Uniprot ID	TBB1_HUMAN
Immunogen	Purified recombinant human Tubulin Beta protein fragments expressed in E.coli.
Immunogen Region	
Specificity	TUBB1 monoclonal antibody (Tubulin Beta-1 Chain) binds to endogenous Tubulin Beta-1 Chain.
Immunogen Sequence	



Western blot analysis using Tubulin Beta monoclonal antibody against A431, HeLa, Jurkat cell lysate.

This product is suitable for in-vitro studies under the RESEARCH USE ONLY [RUO] licence. This product must not be used as for diagnostic or other medical purposes.
St John's Laboratory Ltd, Knowledge Dock Business Centre, University Way, London, E16 2RD | Tel: 0208 223 3081