

Anti-CRTC1 antibody (N-Term) (STJ98565)

STJ98565

GENERAL INFORMATION

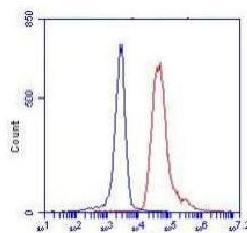
| | |
|--------------------------|---|
| Product Type | Primary antibodies |
| Short Description | Mouse monoclonal antibody anti-Creb-Regulated Transcription Coactivator 1 (N-Term) is suitable for use in Western Blot, Flow Cytometry, Immunofluorescence and Immunocytochemistry research applications. |
| Applications | WB, FC, IF, ICC |
| Host/Source | Mouse |
| Reactivity | Human, Mouse, Rat, Pig |

PRODUCT PROPERTIES

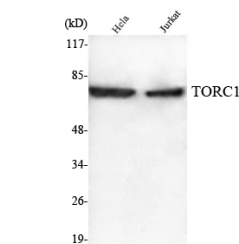
| | |
|----------------------------|--|
| Clonality | Monoclonal |
| Clone ID | |
| Concentration | 1 mg/mL |
| Conjugation | Unconjugated |
| Purification | The antibody was isolated from ascitic fluid by immunoaffinity chromatography using antigens coupled to agarose beads. |
| Dilution Range | WB 1:1000-1:2000 FC 1:100-1:200 IF 1:100-1:500 |
| Formulation | Buffer, 0.1M Tris-Glycine (pH 7.4, 150 mM NaCl) with 0.2% Sodium Azide, 50% Glycerol. |
| Isotype | |
| Storage Instruction | Store at -20°C for up to 1 year from the date of receipt, and avoid repeat freeze-thaw cycles. |

TARGET INFORMATION

| | |
|---------------------------|--|
| Gene ID | 23373 |
| Gene Symbol | CRTC1 |
| Uniprot ID | CRTC1_HUMAN |
| Immunogen | Purified recombinant human TORC1 (N-terminus) protein fragments expressed in E.coli. |
| Immunogen Region | N-Term |
| Specificity | CRTC1 monoclonal antibody (Creb-Regulated Transcription Coactivator 1) binds to endogenous Creb-Regulated Transcription Coactivator 1 at the amino acid region N-Term. |
| Immunogen Sequence | |



Flow cytometric analysis of K562 cells stained with TORC1 monoclonal antibody (red) followed by FITC-conjugated goat anti-mouse IgG. Blue line histogram represents the isotype control, normal mouse IgG.



Western blot analysis using TORC1 monoclonal antibody against HeLa, Jurkat cell lysate.