

## Anti-TBL1XR1 antibody (STJ98558)

STJ98558

### GENERAL INFORMATION

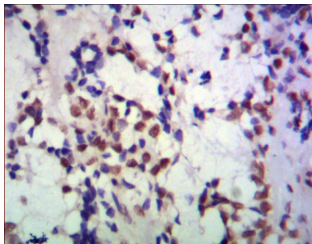
<b>Product Type</b>	Primary antibodies
<b>Short Description</b>	Mouse monoclonal antibody anti-F-Box-Like/Wd Repeat-Containing Protein Tbl1xr1 is suitable for use in Western Blot, Immunohistochemistry, Immunofluorescence and Immunocytochemistry research applications.
<b>Applications</b>	WB, IHC-P, IF, ICC
<b>Host/Source</b>	Mouse
<b>Reactivity</b>	Human, Mouse, Rat, Bovine, Chicken, Dog, Pig, Zebrafish

### PRODUCT PROPERTIES

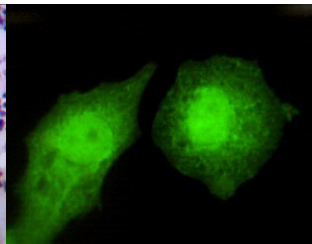
<b>Clonality</b>	Monoclonal
<b>Clone ID</b>	
<b>Concentration</b>	1 mg/mL
<b>Conjugation</b>	Unconjugated
<b>Purification</b>	The antibody was isolated from ascitic fluid by immunoaffinity chromatography using antigens coupled to agarose beads.
<b>Dilution Range</b>	WB 1:1000-1:2000 IHC 1:500-1:1000 IF 1:100-1:500
<b>Formulation</b>	Buffer, 0.1M Tris-Glycine (pH 7.4, 150 mM NaCl) with 0.2% Sodium Azide, 50% Glycerol.
<b>Isotype</b>	
<b>Storage Instruction</b>	Store at -20°C for up to 1 year from the date of receipt, and avoid repeat freeze-thaw cycles.

### TARGET INFORMATION

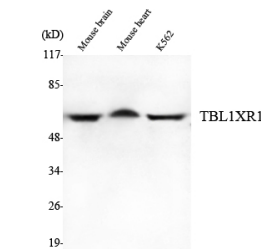
<b>Gene ID</b>	79718
<b>Gene Symbol</b>	TBL1XR1
<b>Uniprot ID</b>	TBL1R_HUMAN
<b>Immunogen</b>	Purified recombinant human TBL1XR1 protein fragments expressed in E.coli.
<b>Immunogen Region</b>	
<b>Specificity</b>	TBL1XR1 monoclonal antibody (F-Box-Like/Wd Repeat-Containing Protein Tbl1xr1) binds to endogenous F-Box-Like/Wd Repeat-Containing Protein Tbl1xr1.
<b>Immunogen Sequence</b>	



Immunohistochemistry analysis of paraffin-embedded human breast cancer using TBL1XR1 monoclonal antibody.



Immunofluorescence analysis of HeLa cells using TBL1XR1 monoclonal antibody.



Western blot analysis using TBL1XR1 monoclonal antibody against mouse brain, mouse heart, K562 cell lysate.

This product is suitable for in-vitro studies under the RESEARCH USE ONLY [RUO] licence. This product must not be used as for diagnostic or other medical purposes.  
St John's Laboratory Ltd, Knowledge Dock Business Centre, University Way, London, E16 2RD | Tel: 0208 223 3081