

## Anti-KDM5C antibody (C-Term) (STJ98552)

STJ98552

### GENERAL INFORMATION

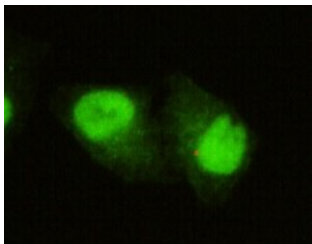
<b>Product Type</b>	Primary antibodies
<b>Short Description</b>	Mouse monoclonal antibody anti-Lysine-Specific Demethylase 5c (C-Term) is suitable for use in Western Blot, Immunofluorescence and Immunocytochemistry research applications.
<b>Applications</b>	WB, IF, ICC
<b>Host/Source</b>	Mouse
<b>Reactivity</b>	Human, Mouse, Rat, Bovine, Dog

### PRODUCT PROPERTIES

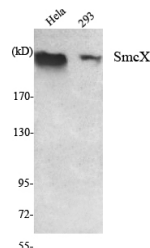
<b>Clonality</b>	Monoclonal
<b>Clone ID</b>	
<b>Concentration</b>	1 mg/mL
<b>Conjugation</b>	Unconjugated
<b>Purification</b>	The antibody was isolated from ascitic fluid by immunoaffinity chromatography using antigens coupled to agarose beads.
<b>Dilution Range</b>	WB 1:1000-1:2000 IF 1:100-1:500
<b>Formulation</b>	Buffer, 0.1M Tris-Glycine (pH 7.4, 150 mM NaCl) with 0.2% Sodium Azide, 50% Glycerol.
<b>Isotype</b>	
<b>Storage Instruction</b>	Store at -20°C for up to 1 year from the date of receipt, and avoid repeat freeze-thaw cycles.

### TARGET INFORMATION

<b>Gene ID</b>	8242
<b>Gene Symbol</b>	KDM5C
<b>Uniprot ID</b>	KDM5C_HUMAN
<b>Immunogen</b>	Purified recombinant human SmcX (C-terminus) protein fragments expressed in E.coli.
<b>Immunogen Region</b>	C-Term
<b>Specificity</b>	KDM5C monoclonal antibody (Lysine-Specific Demethylase 5c) binds to endogenous Lysine-Specific Demethylase 5c at the amino acid region C-Term.
<b>Immunogen Sequence</b>	



Immunofluorescence analysis of HeLa cells using SmcX monoclonal antibody.



Western blot analysis using SmcX monoclonal antibody against HeLa, 293 cell lysate.

This product is suitable for in-vitro studies under the RESEARCH USE ONLY [RUO] licence. This product must not be used as for diagnostic or other medical purposes.  
St John's Laboratory Ltd, Knowledge Dock Business Centre, University Way, London, E16 2RD | Tel: 0208 223 3081