

Anti-PPP4C antibody (STJ98539)

STJ98539

GENERAL INFORMATION

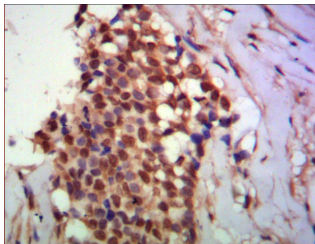
Product Type	Primary antibodies
Short Description	Mouse monoclonal antibody anti-Serine/Threonine-Protein Phosphatase 4 Catalytic Subunit is suitable for use in Western Blot, Immunohistochemistry, Immunofluorescence and Immunocytochemistry research applications.
Applications	WB, IHC-P, IF, ICC
Host/Source	Mouse
Reactivity	Human, Mouse, Rat, Bovine, Dog, Zebrafish

PRODUCT PROPERTIES

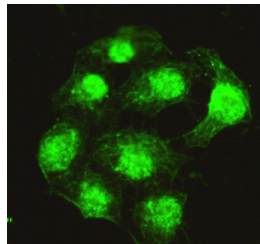
Clonality	Monoclonal
Clone ID	
Concentration	1 mg/mL
Conjugation	Unconjugated
Purification	The antibody was isolated from ascitic fluid by immunoaffinity chromatography using antigens coupled to agarose beads.
Dilution Range	WB 1:1000-1:2000 IHC 1:500-1:1000 IF 1:100-1:500
Formulation	Buffer, 0.1M Tris-Glycine (pH 7.4, 150 mM NaCl) with 0.2% Sodium Azide, 50% Glycerol.
Isotype	
Storage Instruction	Store at -20°C for up to 1 year from the date of receipt, and avoid repeat freeze-thaw cycles.

TARGET INFORMATION

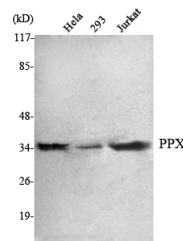
Gene ID	5531
Gene Symbol	PPP4C
Uniprot ID	PP4C_HUMAN
Immunogen	Purified recombinant human PPX protein fragments expressed in E.coli.
Immunogen Region	
Specificity	PPP4C monoclonal antibody (Serine/Threonine-Protein Phosphatase 4 Catalytic Subunit) binds to endogenous Serine/Threonine-Protein Phosphatase 4 Catalytic Subunit.
Immunogen Sequence	



Immunohistochemistry analysis of paraffin-embedded human breast cancer using PPP4C monoclonal antibody.



Immunofluorescence analysis of HeLa cells using PPP4C monoclonal antibody.



Western blot analysis using PPP4C monoclonal antibody against HeLa, 293, Jurkat cell lysate.

This product is suitable for in-vitro studies under the RESEARCH USE ONLY [RUO] licence. This product must not be used as for diagnostic or other medical purposes.
St John's Laboratory Ltd, Knowledge Dock Business Centre, University Way, London, E16 2RD | Tel: 0208 223 3081