

Anti-PPP3CA antibody (STJ98536)

STJ98536

GENERAL INFORMATION

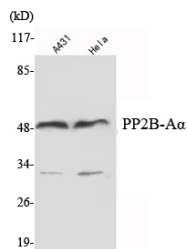
Product Type	Primary antibodies
Short Description	Mouse monoclonal antibody anti-Serine/Threonine-Protein Phosphatase 2b Catalytic Subunit Alpha Isoform is suitable for use in Western Blot research applications.
Applications	WB
Host/Source	Mouse
Reactivity	Human, Mouse, Rat

PRODUCT PROPERTIES

Clonality	Monoclonal
Clone ID	
Concentration	1 mg/mL
Conjugation	Unconjugated
Purification	The antibody was isolated from ascitic fluid by immunoaffinity chromatography using antigens coupled to agarose beads.
Dilution Range	WB 1:1000-1:2000
Formulation	Buffer, 0.1M Tris-Glycine (pH 7.4, 150 mM NaCl) with 0.2% Sodium Azide, 50% Glycerol.
Isotype	
Storage Instruction	Store at -20°C for up to 1 year from the date of receipt, and avoid repeat freeze-thaw cycles.

TARGET INFORMATION

Gene ID	5530
Gene Symbol	PPP3CA
Uniprot ID	PP2BA_HUMAN
Immunogen	Purified recombinant human PP2B-A Alpha protein fragments expressed in E.coli.
Region	
Specificity	PPP3CA monoclonal antibody (Serine/Threonine-Protein Phosphatase 2b Catalytic Subunit Alpha Isoform) binds to endogenous Serine/Threonine-Protein Phosphatase 2b Catalytic Subunit Alpha Isoform.
Immunogen Sequence	



Western blot analysis using PP2B-A Alpha monoclonal antibody against A431, HeLa cell lysate.