

Anti-PPP2CA antibody (N-Term) (STJ98535)

STJ98535

GENERAL INFORMATION

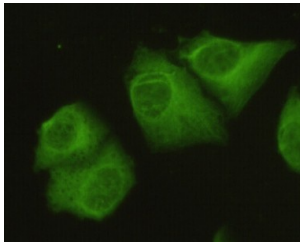
Product Type	Primary antibodies
Short Description	Mouse monoclonal antibody anti-Serine/Threonine-Protein Phosphatase 2a Catalytic Subunit Alpha Isoform (N-Term) is suitable for use in Western Blot, Immunofluorescence and Immunocytochemistry research applications.
Applications	WB, IF, ICC
Host/Source	Mouse
Reactivity	Human, Mouse, Bovine, Chicken, Dog, Pig, Rabbit, Zebrafish

PRODUCT PROPERTIES

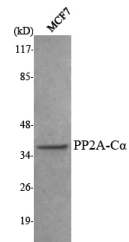
Clonality	Monoclonal
Clone ID	
Concentration	1 mg/mL
Conjugation	Unconjugated
Purification	The antibody was isolated from ascitic fluid by immunoaffinity chromatography using antigens coupled to agarose beads.
Dilution	WB 1:1000-1:2000
Range	IF 1:100-1:500
Formulation	Buffer, 0.1M Tris-Glycine (pH 7.4, 150 mM NaCl) with 0.2% Sodium Azide, 50% Glycerol.
Isotype	
Storage Instruction	Store at -20°C for up to 1 year from the date of receipt, and avoid repeat freeze-thaw cycles.

TARGET INFORMATION

Gene ID	5515
Gene Symbol	PPP2CA
Uniprot ID	PP2AA_HUMAN
Immunogen	Purified recombinant human PP2A-C Alpha (N-terminus) protein fragments expressed in E.coli.
Immunogen Region	N-Term
Specificity	PPP2CA monoclonal antibody (Serine/Threonine-Protein Phosphatase 2a Catalytic Subunit Alpha Isoform) binds to endogenous Serine/Threonine-Protein Phosphatase 2a Catalytic Subunit Alpha Isoform at the amino acid region N-Term.
Immunogen Sequence	



Immunofluorescence analysis of HeLa cells using PP2A-C Alpha monoclonal antibody.



Western blot analysis using PP2A-C Alpha monoclonal antibody against MCF7 cell lysate.

This product is suitable for in-vitro studies under the RESEARCH USE ONLY [RUO] licence. This product must not be used as for diagnostic or other medical purposes.
 St John's Laboratory Ltd, Knowledge Dock Business Centre, University Way, London, E16 2RD | Tel: 0208 223 3081