

Anti-PSME3 antibody (STJ98526)

STJ98526

GENERAL INFORMATION

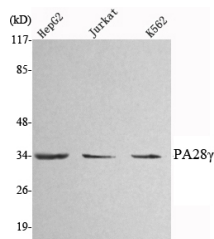
Product Type	Primary antibodies
Short Description	Mouse monoclonal antibody anti-Proteasome Activator Complex Subunit 3 is suitable for use in Western Blot, Immunofluorescence and Immunocytochemistry research applications.
Applications	WB, IF, ICC
Host/Source	Mouse
Reactivity	Human, Mouse, Dog, Pig

PRODUCT PROPERTIES

Clonality	Monoclonal
Clone ID	
Concentration	1 mg/mL
Conjugation	Unconjugated
Purification	The antibody was isolated from ascitic fluid by immunoaffinity chromatography using antigens coupled to agarose beads.
Dilution Range	WB 1:1000-1:2000 IF 1:100-1:500
Formulation	Buffer, 0.1M Tris-Glycine (pH 7.4, 150 mM NaCl) with 0.2% Sodium Azide, 50% Glycerol.
Isotype	
Storage Instruction	Store at -20°C for up to 1 year from the date of receipt, and avoid repeat freeze-thaw cycles.

TARGET INFORMATION

Gene ID	10197
Gene Symbol	PSME3
Uniprot ID	PSME3_HUMAN
Immunogen	Purified recombinant human PA28 Gamma protein fragments expressed in E.coli.
Immunogen Region	
Specificity	PSME3 monoclonal antibody (Proteasome Activator Complex Subunit 3) binds to endogenous Proteasome Activator Complex Subunit 3.
Immunogen Sequence	



Western blot analysis using PA28 Gamma monoclonal antibody against HepG2, Jurkat, K562 cell lysate.

This product is suitable for in-vitro studies under the RESEARCH USE ONLY [RUO] licence. This product must not be used as for diagnostic or other medical purposes.
St John's Laboratory Ltd, Knowledge Dock Business Centre, University Way, London, E16 2RD | Tel: 0208 223 3081