

Anti-KDM1A antibody (N-Term) (STJ98515)

STJ98515

GENERAL INFORMATION

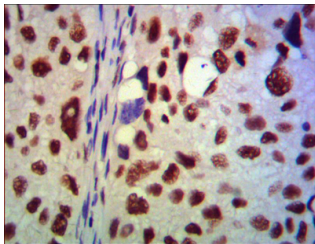
Product Type	Primary antibodies
Short Description	Mouse monoclonal antibody anti-Lysine-Specific Histone Demethylase 1a (N-Term) is suitable for use in Western Blot, Immunohistochemistry, Immunofluorescence and Immunocytochemistry research applications.
Applications	WB, IHC-P, IF, ICC
Host/Source	Mouse
Reactivity	Human, Mouse, Bovine, Dog, Pig

PRODUCT PROPERTIES

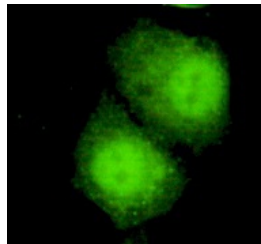
Clonality	Monoclonal
Clone ID	
Concentration	1 mg/mL
Conjugation	Unconjugated
Purification	The antibody was isolated from ascitic fluid by immunoaffinity chromatography using antigens coupled to agarose beads.
Dilution Range	WB 1:1000-1:2000 IHC 1:500-1:1000 IF 1:100-1:500
Formulation	Buffer, 0.1M Tris-Glycine (pH 7.4, 150 mM NaCl) with 0.2% Sodium Azide, 50% Glycerol.
Isotype	
Storage Instruction	Store at -20°C for up to 1 year from the date of receipt, and avoid repeat freeze-thaw cycles.

TARGET INFORMATION

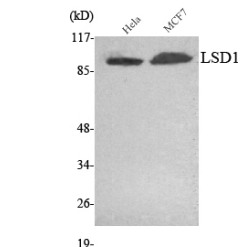
Gene ID	23028
Gene Symbol	KDM1A
Uniprot ID	KDM1A_HUMAN
Immunogen	Purified recombinant human LSD1 (N-terminus) protein fragments expressed in E.coli.
Immunogen Region	N-Term
Specificity	KDM1A monoclonal antibody (Lysine-Specific Histone Demethylase 1a) binds to endogenous Lysine-Specific Histone Demethylase 1a at the amino acid region N-Term.
Immunogen Sequence	



Immunohistochemistry analysis of paraffin-embedded human lung cancer using LSD1 monoclonal antibody.



Immunofluorescence analysis of HeLa cells using LSD1 monoclonal antibody.



Western blot analysis using LSD1 monoclonal antibody against HeLa, MCF7 cell lysate.

This product is suitable for in-vitro studies under the RESEARCH USE ONLY [RUO] licence. This product must not be used as for diagnostic or other medical purposes.
St John's Laboratory Ltd, Knowledge Dock Business Centre, University Way, London, E16 2RD | Tel: 0208 223 3081