

Anti-CBX1 antibody (STJ98502)

STJ98502

GENERAL INFORMATION

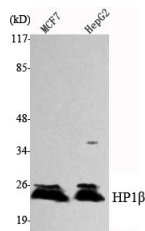
Product Type	Primary antibodies
Short Description	Mouse monoclonal antibody anti-Chromobox Protein Homolog 1 is suitable for use in Western Blot research applications.
Applications	WB
Host/Source	Mouse
Reactivity	Human, Mouse, Rat, Bovine, Chicken, Dog, Pig

PRODUCT PROPERTIES

Clonality	Monoclonal
Clone ID	
Concentration	1 mg/mL
Conjugation	Unconjugated
Purification	The antibody was isolated from ascitic fluid by immunoaffinity chromatography using antigens coupled to agarose beads.
Dilution Range	WB 1:1000-1:2000
Formulation	Buffer, 0.1M Tris-Glycine (pH 7.4, 150 mM NaCl) with 0.2% Sodium Azide, 50% Glycerol.
Isotype	
Storage Instruction	Store at -20°C for up to 1 year from the date of receipt, and avoid repeat freeze-thaw cycles.

TARGET INFORMATION

Gene ID	10951
Gene Symbol	CBX1
Uniprot ID	CBX1_HUMAN
Immunogen	Purified recombinant human HP1 Beta protein fragments expressed in E.coli.
Immunogen Region	
Specificity	CBX1 monoclonal antibody (Chromobox Protein Homolog 1) binds to endogenous Chromobox Protein Homolog 1.
Immunogen Sequence	



Western blot analysis using HP1 Beta monoclonal antibody against MCF7, HepG2 cell lysate.

This product is suitable for in-vitro studies under the RESEARCH USE ONLY [RUO] licence. This product must not be used as for diagnostic or other medical purposes.
St John's Laboratory Ltd, Knowledge Dock Business Centre, University Way, London, E16 2RD | Tel: 0208 223 3081