

Anti-CRTC1 antibody [1B5] (STJ98426)

STJ98426

GENERAL INFORMATION

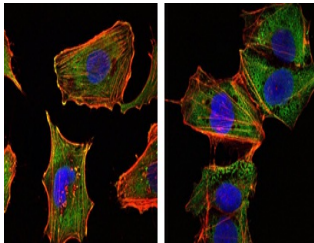
Product Type	Primary antibodies
Short Description	Mouse monoclonal antibody anti-Creb-Regulated Transcription Coactivator 1 is suitable for use in Western Blot, Immunofluorescence, Immunocytochemistry, Flow Cytometry and ELISA research applications.
Applications	WB, IF, ICC, FC, ELISA
Host/Source	Mouse
Reactivity	Human

PRODUCT PROPERTIES

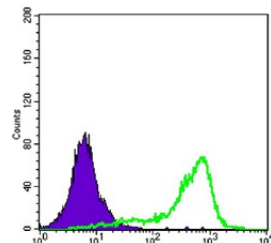
Clonality	Monoclonal
Clone ID	1B5
Concentration	
Conjugation	Unconjugated
Purification	The antibody was isolated from ascitic fluid by immunoaffinity chromatography using antigens coupled to agarose beads.
Dilution Range	WB 1:500-1:2000 IF 1:200-1:1000 FC 1:200-1:400 ELISA 1:10000
Formulation	Ascitic fluid, 0.03% Sodium Azide, 0.5% BSA, 50% Glycerol.
Isotype	IgG1
Storage Instruction	Store at -20°C for up to 1 year from the date of receipt, and avoid repeat freeze-thaw cycles.

TARGET INFORMATION

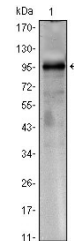
Gene ID	23373
Gene Symbol	CRTC1
Uniprot ID	CRTC1_HUMAN
Immunogen	Purified recombinant fragment of human TORC1 expressed in E.coli.
Immunogen Region	
Specificity	CRTC1 monoclonal antibody (Creb-Regulated Transcription Coactivator 1) binds to endogenous Creb-Regulated Transcription Coactivator 1.
Immunogen Sequence	



Immunofluorescence analysis of U251 (left) and NTERA2 (right) cells using TORC1 monoclonal antibody (green). Red: Actin filaments have been labeled with DY-554 phalloidin. Blue: DRAQ5 fluorescent DNA dye.



Flow cytometric analysis of K562 cells using TORC1 monoclonal antibody (green) and negative control (purple).



Western blot analysis using TORC1 monoclonal antibody against CRTC1-hlgGfc transfected HEK293 cell lysate.

This product is suitable for in-vitro studies under the RESEARCH USE ONLY [RUO] licence. This product must not be used as for diagnostic or other medical purposes.
St John's Laboratory Ltd, Knowledge Dock Business Centre, University Way, London, E16 2RD | Tel: 0208 223 3081