

Anti-THAP11 antibody [3F3] (STJ98419)

STJ98419

GENERAL INFORMATION

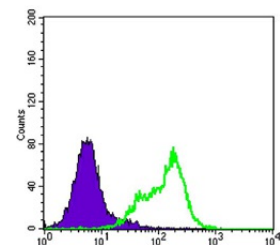
Product Type	Primary antibodies
Short Description	Mouse monoclonal antibody anti-Thap Domain-Containing Protein 11 is suitable for use in Western Blot, Immunohistochemistry, Immunofluorescence, Immunocytochemistry, Flow Cytometry and ELISA research applications.
Applications	WB, IHC-P, IF, ICC, FC, ELISA
Host/Source	Mouse
Reactivity	Human

PRODUCT PROPERTIES

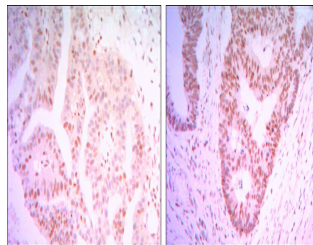
Clonality	Monoclonal
Clone ID	3F3
Concentration	
Conjugation	Unconjugated
Purification	The antibody was isolated from ascitic fluid by immunoaffinity chromatography using antigens coupled to agarose beads.
Dilution Range	WB 1:500-1:2000 IHC 1:200-1:1000 IF 1:200-1:1000 FC 1:200-1:400 ELISA 1:10000
Formulation	Ascitic fluid, 0.03% Sodium Azide, 0.5% BSA, 50% Glycerol.
Isotype	IgG1
Storage Instruction	Store at -20°C for up to 1 year from the date of receipt, and avoid repeat freeze-thaw cycles.

TARGET INFORMATION

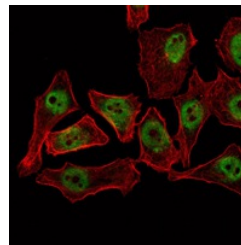
Gene ID	57215
Gene Symbol	THAP11
Uniprot ID	THA11_HUMAN
Immunogen	Purified recombinant fragment of human THAP11 expressed in E.coli.
Immunogen Region	
Specificity	THAP11 monoclonal antibody (Thap Domain-Containing Protein 11) binds to endogenous Thap Domain-Containing Protein 11.
Immunogen Sequence	



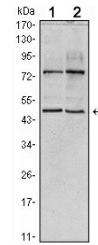
Flow cytometric analysis of HeLa cells using THAP11 monoclonal antibody (green) and negative control (purple).



Immunohistochemistry analysis of paraffin-embedded colon cancer tissues (left) and ovary cancer tissues (right) with DAB staining using THAP11 monoclonal antibody.



Immunofluorescence analysis of NTERA-2 cells using THAP11 monoclonal antibody (green). Red: Actin filaments have been labeled with Alexa Fluor-555 phalloidin.



Western blot analysis using THAP11 monoclonal antibody against HeLa (1) and NTERA-2 (2) cell lysate.

This product is suitable for in-vitro studies under the RESEARCH USE ONLY [RUO] licence. This product must not be used as for diagnostic or other medical purposes.
St John's Laboratory Ltd, Knowledge Dock Business Centre, University Way, London, E16 2RD | Tel: 0208 223 3081