

## Anti-CCT2 antibody [5B5C4] (STJ98415)

STJ98415

### GENERAL INFORMATION

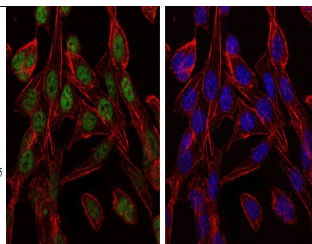
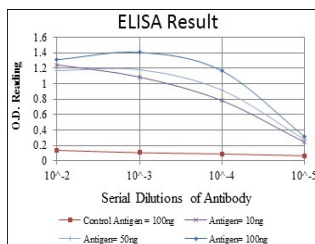
|                          |   |
|--------------------------|---|
| <b>Product Type</b>      | Primary antibodies  |
| <b>Short Description</b> | Mouse monoclonal antibody anti-T-Complex Protein 1 Subunit Beta is suitable for use in Western Blot, Immunofluorescence, Immunocytochemistry, Flow Cytometry and ELISA research applications. |
| <b>Applications</b>      | WB, IF, ICC, FC, ELISA  |
| <b>Host/Source</b>       | Mouse   |
| <b>Reactivity</b>        | Human, Mouse, Rat, Monkey   |

### PRODUCT PROPERTIES

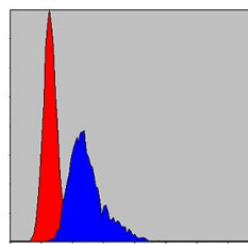
|                            |  |
|----------------------------|--|
| <b>Clonality</b>           | Monoclonal   |
| <b>Clone ID</b>            | 5B5C4  |
| <b>Concentration</b>       |  |
| <b>Conjugation</b>         | Unconjugated   |
| <b>Purification</b>        | The antibody was isolated from ascitic fluid by immunoaffinity chromatography using antigens coupled to agarose beads. |
| <b>Dilution Range</b>      | WB 1:500-1:2000<br>IF 1:200-1:1000<br>FC 1:200-1:400<br>ELISA 1:10000  |
| <b>Formulation</b>         | Ascitic fluid, 0.03% Sodium Azide, 0.5% BSA, 50% Glycerol.   |
| <b>Isotype</b>             | IgG1   |
| <b>Storage Instruction</b> | Store at -20°C for up to 1 year from the date of receipt, and avoid repeat freeze-thaw cycles.                         |

### TARGET INFORMATION

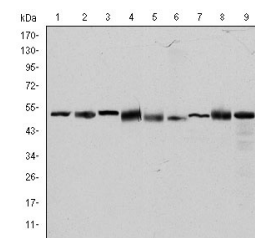
|                           |   |
|---------------------------|---|
| <b>Gene ID</b>            | 10576   |
| <b>Gene Symbol</b>        | CCT2  |
| <b>Uniprot ID</b>         | TCPB_HUMAN  |
| <b>Immunogen</b>          | Purified recombinant fragment of human TCP-1 Beta expressed in E.coli.  |
| <b>Immunogen Region</b>   |   |
| <b>Specificity</b>        | CCT2 monoclonal antibody (T-Complex Protein 1 Subunit Beta) binds to endogenous T-Complex Protein 1 Subunit Beta. |
| <b>Immunogen Sequence</b> |   |



Immunofluorescence analysis of 3T3-L1 cells using TCP-1 Beta monoclonal antibody (green). Blue: DRAQ5 fluorescent DNA dye. Red: Actin filaments have been labeled with Alexa Fluor-555 phalloidin.



Flow cytometric analysis of NIH/3T3 cells using TCP-1 Beta monoclonal antibody (blue) and negative control (red).



Western blot analysis using TCP-1 Beta monoclonal antibody against HeLa (1), MCF-7 (2), Jurkat (3), T47D (4), K562 (5), A431 (6), NIH/3T3 (7), PC-12 (8) and Cos7 (9) cell lysate.

This product is suitable for in-vitro studies under the RESEARCH USE ONLY [RUO] licence. This product must not be used as for diagnostic or other medical purposes.  
St John's Laboratory Ltd, Knowledge Dock Business Centre, University Way, London, E16 2RD | Tel: 0208 223 3081