

Anti-SNCG antibody [1H10D2] (STJ98409)

STJ98409

GENERAL INFORMATION

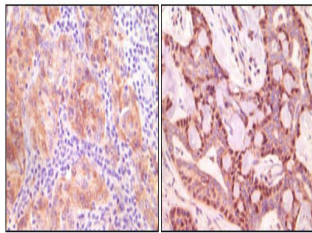
Product Type	Primary antibodies
Short Description	Mouse monoclonal antibody anti-Gamma-Synuclein is suitable for use in Western Blot, Immunohistochemistry, Immunofluorescence and ELISA research applications.
Applications	WB, IHC-P, IF-P, ELISA
Host/Source	Mouse
Reactivity	Human

PRODUCT PROPERTIES

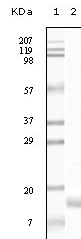
Clonality	Monoclonal
Clone ID	1H10D2
Concentration	1 mg/mL
Conjugation	Unconjugated
Purification	The antibody was isolated from ascitic fluid by immunoaffinity chromatography using antigens coupled to agarose beads.
Dilution Range	WB 1:500-1:2000 IHC 1:200-1:1000 ELISA 1:10000
Formulation	PBS, 0.03% Sodium Azide.
Isotype	IgG1
Storage Instruction	Store at -20°C for up to 1 year from the date of receipt, and avoid repeat freeze-thaw cycles.

TARGET INFORMATION

Gene ID	6623
Gene Symbol	SNCG
Uniprot ID	SYUG_HUMAN
Immunogen	Purified recombinant fragment of Synuclein-Gamma expressed in E.coli.
Immunogen Region	
Specificity	SNCG monoclonal antibody (Gamma-Synuclein) binds to endogenous Gamma-Synuclein.
Immunogen Sequence	



Immunohistochemistry analysis of paraffin-embedded human ovary carcinoma (left) and breast carcinoma (right), showing cytoplasmic (ovary carcinoma) localization, cytoplasmic and nuclear (breast carcinoma) localization with DAB staining using Synuclein-Gamma Mo



Western blot analysis using Synuclein-Gamma monoclonal antibody against truncated Synuclein-Gamma recombinant protein.