

Anti-SNCA antibody [2B2D1/2B2A11] (STJ98408)

STJ98408

GENERAL INFORMATION

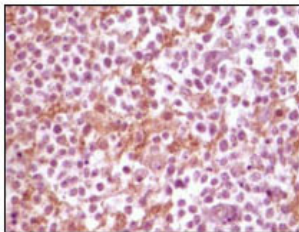
Product Type	Primary antibodies
Short Description	Mouse monoclonal antibody anti-Alpha-Synuclein is suitable for use in Western Blot, Immunohistochemistry, Immunofluorescence and ELISA research applications.
Applications	WB, IHC-P, IF-P, ELISA
Host/Source	Mouse
Reactivity	Human

PRODUCT PROPERTIES

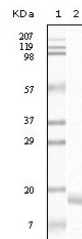
Clonality	Monoclonal
Clone ID	2B2D1/2B2A11
Concentration	
Conjugation	Unconjugated
Purification	The antibody was isolated from ascitic fluid by immunoaffinity chromatography using antigens coupled to agarose beads.
Dilution Range	WB 1:500-1:2000 IHC 1:200-1:1000 ELISA 1:10000
Formulation	Ascitic fluid, 0.03% Sodium Azide, 0.5% BSA, 50% Glycerol.
Isotype	
Storage Instruction	Store at -20°C for up to 1 year from the date of receipt, and avoid repeat freeze-thaw cycles.

TARGET INFORMATION

Gene ID	6622
Gene Symbol	SNCA
Uniprot ID	SYUA_HUMAN
Immunogen	Purified recombinant fragment of Synuclein-Alpha expressed in E.coli.
Immunogen Region	
Specificity	SNCA monoclonal antibody (Alpha-Synuclein) binds to endogenous Alpha-Synuclein.
Immunogen Sequence	



Immunohistochemistry analysis of paraffin-embedded human glioma tissue, showing membrane localization with DAB staining using Synuclein-Alpha monoclonal antibody.



Western blot analysis using Synuclein-Alpha monoclonal antibody against truncated Synuclein-Alpha recombinant protein.

This product is suitable for in-vitro studies under the RESEARCH USE ONLY [RUO] licence. This product must not be used as for diagnostic or other medical purposes.
St John's Laboratory Ltd, Knowledge Dock Business Centre, University Way, London, E16 2RD | Tel: 0208 223 3081