

## Anti-STAT6 antibody [7D3] (STJ98402)

STJ98402

### GENERAL INFORMATION

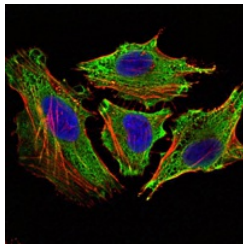
<b>Product Type</b>	Primary antibodies
<b>Short Description</b>	Mouse monoclonal antibody anti-Signal Transducer And Activator Of Transcription 6 is suitable for use in Western Blot, Immunofluorescence, Immunocytochemistry and ELISA research applications.
<b>Applications</b>	WB, IF, ICC, ELISA
<b>Host/Source</b>	Mouse
<b>Reactivity</b>	Human, Mouse, Rat, Monkey

### PRODUCT PROPERTIES

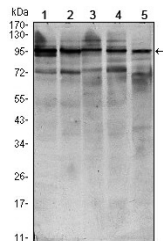
<b>Clonality</b>	Monoclonal
<b>Clone ID</b>	7D3
<b>Concentration</b>	
<b>Conjugation</b>	Unconjugated
<b>Purification</b>	The antibody was isolated from ascitic fluid by immunoaffinity chromatography using antigens coupled to agarose beads.
<b>Dilution Range</b>	WB 1:500-1:2000 IF 1:200-1:1000 ELISA 1:10000
<b>Formulation</b>	Ascitic fluid, 0.03% Sodium Azide, 0.5% BSA, 50% Glycerol.
<b>Isotype</b>	IgG1
<b>Storage Instruction</b>	Store at -20°C for up to 1 year from the date of receipt, and avoid repeat freeze-thaw cycles.

### TARGET INFORMATION

<b>Gene ID</b>	6778
<b>Gene Symbol</b>	STAT6
<b>Uniprot ID</b>	STAT6_HUMAN
<b>Immunogen</b>	Purified recombinant fragment of human Stat6 expressed in E.coli.
<b>Immunogen Region</b>	
<b>Specificity</b>	STAT6 monoclonal antibody (Signal Transducer And Activator Of Transcription 6) binds to endogenous Signal Transducer And Activator Of Transcription 6.
<b>Immunogen Sequence</b>	



Immunofluorescence analysis of HeLa cells using Stat6 monoclonal antibody (green). Blue: DAPI fluorescent DNA dye. Red: Actin filaments have been labeled with Alexa Fluor-555 phalloidin.



Western blot analysis using Stat6 monoclonal antibody against HEK293 (1), NIH/3T3 (2), MCF-7 (3), Raw246.7 (4) and PC-12 (5) cell lysate.

This product is suitable for in-vitro studies under the RESEARCH USE ONLY [RUO] licence. This product must not be used as for diagnostic or other medical purposes.  
St John's Laboratory Ltd, Knowledge Dock Business Centre, University Way, London, E16 2RD | Tel: 0208 223 3081