

Anti-SORL1 antibody [3B6B11] (STJ98393)

STJ98393

GENERAL INFORMATION

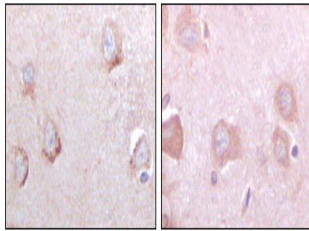
Product Type	Primary antibodies
Short Description	Mouse monoclonal antibody anti-Sortilin-Related Receptor is suitable for use in Western Blot, Immunohistochemistry, Immunofluorescence, Immunocytochemistry and ELISA research applications.
Applications	WB, IHC-P, IF, ICC, ELISA
Host/Source	Mouse
Reactivity	Human

PRODUCT PROPERTIES

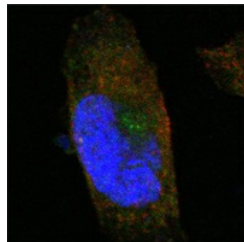
Clonality	Monoclonal
Clone ID	3B6B11
Concentration	
Conjugation	Unconjugated
Purification	The antibody was isolated from ascitic fluid by immunoaffinity chromatography using antigens coupled to agarose beads.
Dilution Range	WB 1:500-1:2000 IHC 1:200-1:1000 IF 1:200-1:1000 ELISA 1:10000
Formulation	Ascitic fluid, 0.03% Sodium Azide, 0.5% BSA, 50% Glycerol.
Isotype	IgG1
Storage Instruction	Store at -20°C for up to 1 year from the date of receipt, and avoid repeat freeze-thaw cycles.

TARGET INFORMATION

Gene ID	6653
Gene Symbol	SORL1
Uniprot ID	SORL_HUMAN
Immunogen	Purified recombinant fragment of human SorLA expressed in E.coli.
Immunogen Region	
Specificity	SORL1 monoclonal antibody (Sortilin-Related Receptor) binds to endogenous Sortilin-Related Receptor.
Immunogen Sequence	



Immunohistochemistry analysis of paraffin-embedded human cerebrum tissues with DAB staining using SorLA monoclonal antibody.



Confocal immunofluorescence analysis of PANC-1 cells using SorLA monoclonal antibody (green). Red: Actin filaments have been labeled with Alexa Fluor-555 phalloidin. Blue: DRAQ5 fluorescent DNA dye.



Western blot analysis using SorLA monoclonal antibody against truncated SorLA recombinant protein.

This product is suitable for in-vitro studies under the RESEARCH USE ONLY [RUO] licence. This product must not be used as for diagnostic or other medical purposes.
St John's Laboratory Ltd, Knowledge Dock Business Centre, University Way, London, E16 2RD | Tel: 0208 223 3081