

Anti-SOD1 antibody [6F5] (STJ98392)

STJ98392

GENERAL INFORMATION

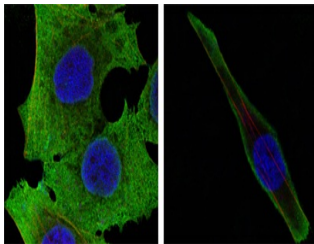
Product Type	Primary antibodies
Short Description	Mouse monoclonal antibody anti-Superoxide Dismutase Cu-Zn is suitable for use in Western Blot, Immunofluorescence, Immunocytochemistry, Flow Cytometry and ELISA research applications.
Applications	WB, IF, ICC, FC, ELISA
Host/Source	Mouse
Reactivity	Human, Mouse

PRODUCT PROPERTIES

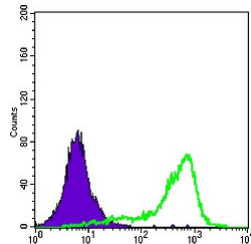
Clonality	Monoclonal
Clone ID	6F5
Concentration	
Conjugation	Unconjugated
Purification	The antibody was isolated from ascitic fluid by immunoaffinity chromatography using antigens coupled to agarose beads.
Dilution Range	WB 1:500-1:2000 IF 1:200-1:1000 FC 1:200-1:400 ELISA 1:10000
Formulation	Ascitic fluid, 0.03% Sodium Azide, 0.5% BSA, 50% Glycerol.
Isotype	IgG1
Storage Instruction	Store at -20°C for up to 1 year from the date of receipt, and avoid repeat freeze-thaw cycles.

TARGET INFORMATION

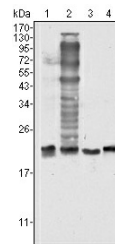
Gene ID	6647
Gene Symbol	SOD1
Uniprot ID	SODC_HUMAN
Immunogen	Purified recombinant fragment of human SOD-1 expressed in E.coli.
Immunogen Region	
Specificity	SOD1 monoclonal antibody (Superoxide Dismutase Cu-Zn) binds to endogenous Superoxide Dismutase Cu-Zn.
Immunogen Sequence	



Confocal immunofluorescence analysis of PANC-1 (left) and SKBR-3 (right) cells using SOD-1 monoclonal antibody (green). Red: Actin filaments have been labeled with DY-554 phalloidin. Blue: DRAQS fluorescent DNA dye.



Flow cytometric analysis of A431 cells using SOD-1 monoclonal antibody (green) and negative control (purple).



Western blot analysis using SOD-1 monoclonal antibody against HeLa (1), NIH/3T3 (2), A549 (3) and A431 (4) cell lysate.

This product is suitable for in-vitro studies under the RESEARCH USE ONLY [RUO] licence. This product must not be used as for diagnostic or other medical purposes.
St John's Laboratory Ltd, Knowledge Dock Business Centre, University Way, London, E16 2RD | Tel: 0208 223 3081