

Anti-SMC1A antibody [5B6] (STJ98388)

STJ98388

GENERAL INFORMATION

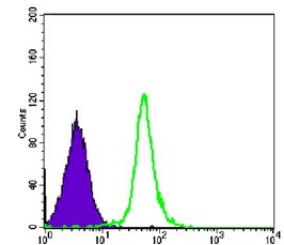
Product Type	Primary antibodies
Short Description	Mouse monoclonal antibody anti-Structural Maintenance Of Chromosomes Protein 1a is suitable for use in Western Blot, Immunohistochemistry, Immunofluorescence, Immunocytochemistry, Flow Cytometry and ELISA research applications.
Applications	WB, IHC-P, IF, ICC, FC, ELISA
Host/Source	Mouse
Reactivity	Human

PRODUCT PROPERTIES

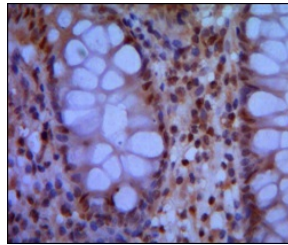
Clonality	Monoclonal
Clone ID	5B6
Concentration	
Conjugation	Unconjugated
Purification	The antibody was isolated from ascitic fluid by immunoaffinity chromatography using antigens coupled to agarose beads.
Dilution Range	WB 1:500-1:2000 IHC 1:200-1:1000 IF 1:200-1:1000 FC 1:200-1:400 ELISA 1:10000
Formulation	Ascitic fluid, 0.03% Sodium Azide, 0.5% BSA, 50% Glycerol.
Isotype	IgG1
Storage Instruction	Store at -20°C for up to 1 year from the date of receipt, and avoid repeat freeze-thaw cycles.

TARGET INFORMATION

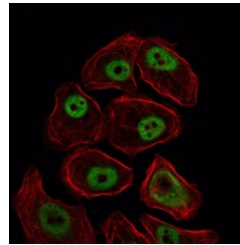
Gene ID	8243
Gene Symbol	SMC1A
Uniprot ID	SMC1A_HUMAN
Immunogen	Purified recombinant fragment of human SMC1 expressed in E.coli.
Immunogen Region	
Specificity	SMC1A monoclonal antibody (Structural Maintenance Of Chromosomes Protein 1a) binds to endogenous Structural Maintenance Of Chromosomes Protein 1a.
Immunogen Sequence	



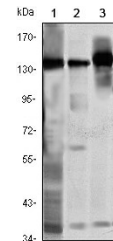
Flow cytometric analysis of HeLa cells using SMC1 monoclonal antibody (green) and negative control (purple).



Immunohistochemistry analysis of paraffin-embedded human colon with DAB staining using SMC1 monoclonal antibody.



Immunofluorescence analysis of NIH/3T3 cells using SMC1 monoclonal antibody (green). Red: Actin filaments have been labeled with Alexa Fluor-555 phalloidin.



Western blot analysis using SMC1 monoclonal antibody against K562 (1), Jurkat (2) and A549 (3) cell lysate.

This product is suitable for in-vitro studies under the RESEARCH USE ONLY [RUO] licence. This product must not be used as for diagnostic or other medical purposes.
St John's Laboratory Ltd, Knowledge Dock Business Centre, University Way, London, E16 2RD | Tel: 0208 223 3081