

## Anti-SMAD6 antibody [5H3] (STJ98387)

STJ98387

### GENERAL INFORMATION

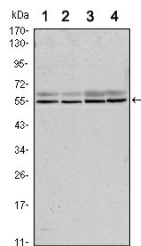
<b>Product Type</b>	Primary antibodies
<b>Short Description</b>	Mouse monoclonal antibody anti-Mothers Against Decapentaplegic Homolog 6 is suitable for use in Western Blot and ELISA research applications.
<b>Applications</b>	WB, ELISA
<b>Host/Source</b>	Mouse
<b>Reactivity</b>	Human

### PRODUCT PROPERTIES

<b>Clonality</b>	Monoclonal
<b>Clone ID</b>	5H3
<b>Concentration</b>	
<b>Conjugation</b>	Unconjugated
<b>Purification</b>	The antibody was isolated from ascitic fluid by immunoaffinity chromatography using antigens coupled to agarose beads.
<b>Dilution Range</b>	WB 1:500-1:2000 ELISA 1:10000
<b>Formulation</b>	Ascitic fluid, 0.03% Sodium Azide, 0.5% BSA, 50% Glycerol.
<b>Isotype</b>	IgG1
<b>Storage</b>	Store at -20°C for up to 1 year from the date of receipt, and avoid repeat freeze-thaw cycles.
<b>Instruction</b>	

### TARGET INFORMATION

<b>Gene ID</b>	4091
<b>Gene Symbol</b>	SMAD6
<b>Uniprot ID</b>	SMAD6_HUMAN
<b>Immunogen</b>	Purified recombinant fragment of human Smad6 expressed in E.coli.
<b>Immunogen Region</b>	
<b>Specificity</b>	SMAD6 monoclonal antibody (Mothers Against Decapentaplegic Homolog 6) binds to endogenous Mothers Against Decapentaplegic Homolog 6.
<b>Immunogen Sequence</b>	



Western blot analysis using Smad6 monoclonal antibody against A431 (1), A431 (2), HeLa (3) and Jurkat (4) cell lysate.