

## Anti-SKP2 antibody (1-130) [6G9D10] (STJ98381)

STJ98381

### GENERAL INFORMATION

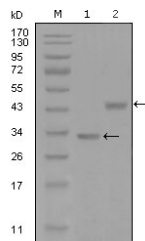
<b>Product Type</b>	Primary antibodies
<b>Short Description</b>	Mouse monoclonal antibody anti-S-Phase Kinase-Associated Protein 2 (1-130) is suitable for use in Western Blot and ELISA research applications.
<b>Applications</b>	WB, ELISA
<b>Host/Source</b>	Mouse
<b>Reactivity</b>	Human

### PRODUCT PROPERTIES

<b>Clonality</b>	Monoclonal
<b>Clone ID</b>	6G9D10
<b>Concentration</b>	
<b>Conjugation</b>	Unconjugated
<b>Purification</b>	The antibody was isolated from ascitic fluid by immunoaffinity chromatography using antigens coupled to agarose beads.
<b>Dilution Range</b>	WB 1:500-1:2000 ELISA 1:10000
<b>Formulation</b>	Ascitic fluid, 0.03% Sodium Azide, 0.5% BSA, 50% Glycerol.
<b>Isotype</b>	IgG1
<b>Storage</b>	Store at -20°C for up to 1 year from the date of receipt, and avoid repeat freeze-thaw cycles.
<b>Instruction</b>	

### TARGET INFORMATION

<b>Gene ID</b>	6502
<b>Gene Symbol</b>	SKP2
<b>Uniprot ID</b>	SKP2_HUMAN
<b>Immunogen</b>	Purified recombinant fragment of Skp2 p45 (aa1-130) expressed in E.coli.
<b>Immunogen Region</b>	1-130
<b>Specificity</b>	SKP2 monoclonal antibody (S-Phase Kinase-Associated Protein 2) binds to endogenous S-Phase Kinase-Associated Protein 2 at the amino acid region 1-130.
<b>Immunogen Sequence</b>	



Western blot analysis using Skp2 p45 monoclonal antibody against truncated Trx-Skp2 p45 recombinant protein (1) and GST-Skp2 p45 (aa1-130) recombinant protein (2).